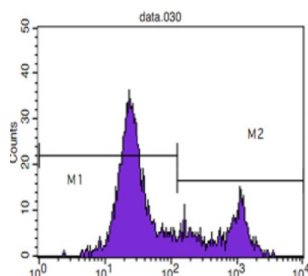


## Cluster of Differentiation 8 (CD8) Antibody

Catalogue No.: abx010529



Flow cytometric analysis of blood T cells using CD8 antibody (M2) and negative control (M1).

CD8 T cell surface antigen is heterodimer of an alpha and a beta chain linked by two disulfide bonds. It belongs to type I membrane protein. Selective expression of CD8 on a subset of T cells leads to CD8 T cell development. Through identifying cytotoxic/suppressor T-cells that interact with MHC class I bearing targets, CD8 is thought to play a role in the process of T-cell mediated killing. Veillette et al (1988) found the CD8 is associated with the internal membrane tyrosine- protein kinase p56lck.

<b>Target:</b>	Cluster of Differentiation 8 (CD8)
<b>Clonality:</b>	Monoclonal
<b>Reactivity:</b>	Human
<b>Tested Applications:</b>	ELISA, FCM
<b>Host:</b>	Mouse
<b>Recommended dilutions:</b>	ELISA: 1/10000, FCM: 1/200 - 1/400. Optimal dilutions/concentrations should be determined by the end user.
<b>Conjugation:</b>	Unconjugated
<b>Immunogen:</b>	Purified recombinant fragment of human CD8 expressed in E. coli.
<b>Isotype:</b>	IgG <sub>1</sub>
<b>Form:</b>	Liquid
<b>Purification:</b>	Purified from ascites by Protein G chromatography.
<b>Storage:</b>	Aliquot and store at -20°C. Avoid repeated freeze/thaw cycles.
<b>UniProt Primary AC:</b>	P01732 ( <a href="#">UniProt</a> , <a href="#">ExPASy</a> )
<b>Gene Symbol:</b>	CD8A

# Datasheet

Version: 4.0.0

Revision date: 21 Jul 2025



**GeneID:** [925](#)

**OMIM:** [186910](#)

**HGNC:** 1706

**KEGG:** hsa:925

**Ensembl:** ENSG00000153563

**String:** [9606.ENSP00000386559](#)

**Molecular Weight:** 25 kDa

**Buffer:** PBS, containing 0.03% sodium azide.

**Concentration:** 1 mg/ml

**Note:** THIS PRODUCT IS FOR RESEARCH USE ONLY. NOT FOR USE IN DIAGNOSTIC, THERAPEUTIC OR COSMETIC PROCEDURES. NOT FOR HUMAN OR ANIMAL CONSUMPTION.

For Reference Only