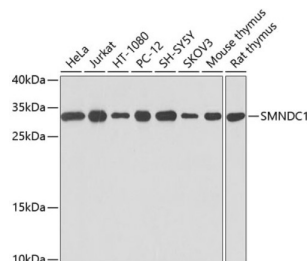


# Survival of Motor Neuron-Related-Splicing Factor 30 (SMNDC1) Antibody

Catalogue No.: abx000816



Western blot analysis of various lysates using SMNDC1 Antibody at 1/1000 dilution. Secondary antibody: HRP-conjugated Goat anti-Rabbit IgG (H+L) at 1/10000 dilution. Lysates/proteins: 25 µg per lane. Blocking buffer: 3% nonfat dry milk in TBST. Exposure time: 10s.

SMNDC1 Antibody is a Rabbit Polyclonal antibody against SMNDC1. SPF30 (survival of motor neuron-related-splicing factor 30), also known as SMNDC1 (survival motor neuron domain containing 1) or SMNR (SMN-related protein), is an essential splicing factor required for spliceosome assembly that belongs to the SMN family. It contains one Tudor domain with significant similarity to SMN (Survival Motor Neuron) and is expressed in skeletal muscle, pancreas and heart, localizing to Cajal bodies and nuclear speckles. SPF30 plays an important role in spliceosome assembly and directly interacts with five U snRNPs. The loss of SPF30 causes spliceosome assembly to arrest at prespliceosomes (A complex). This supports a function for SPF30 in mediating the incorporation/recruitment of U4/U5/U6 tri-snRNP to the prespliceosome. In addition, the overexpression of SPF30 can lead to apoptosis.

<b>Target:</b>	Survival of Motor Neuron-Related-Splicing Factor 30 (SMNDC1)
<b>Clonality:</b>	Polyclonal
<b>Reactivity:</b>	Human, Mouse, Rat
<b>Tested Applications:</b>	ELISA, WB
<b>Host:</b>	Rabbit
<b>Recommended dilutions:</b>	ELISA: 1 µg/ml, WB: 1/500 - 1/2000. Optimal dilutions/concentrations should be determined by the end user.
<b>Conjugation:</b>	Unconjugated
<b>Immunogen:</b>	Recombinant fusion protein containing a sequence corresponding to amino acids 1-238 of human SMNDC1.
<b>Isotype:</b>	IgG
<b>Form:</b>	Liquid
<b>Purification:</b>	Purified by affinity chromatography.

# Datasheet

Version: 4.0.0  
Revision date: 06 Mar 2025



**Storage:** Aliquot and store at -20°C. Avoid repeated freeze/thaw cycles.

**UniProt Primary AC:** O75940 ([UniProt](#), [ExPASy](#))

**Gene Symbol:** SMNDC1

**GeneID:** [10285](#)

**NCBI Accession:** NP\_005862.1

**KEGG:** hsa:10285

**String:** [9606.ENSP00000358616](#)

**Molecular Weight:** Calculated MW: 27 kDa  
Observed MW: 27 kDa

**Buffer:** PBS, pH 7.3, containing 0.02% sodium azide, 50% glycerol.

**Concentration:** > 0.2 mg/ml

**Note:** THIS PRODUCT IS FOR RESEARCH USE ONLY. NOT FOR USE IN DIAGNOSTIC, THERAPEUTIC OR COSMETIC PROCEDURES. NOT FOR HUMAN OR ANIMAL CONSUMPTION.