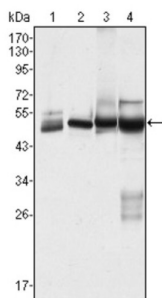
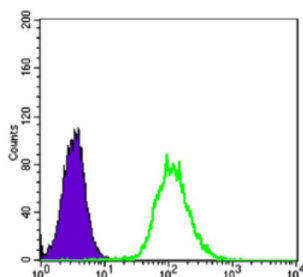


Keratin, Type II Cytoskeletal 7 (KRT7) Antibody

Catalogue No.: abx010567



Western blot analysis using CK7 antibody against HeLa (1), MCF-7 (2), A431 (3) and A549 (4) cell lysate.



Flow cytometric analysis of HeLa cells using anti-CK7 antibody (green) and negative control (purple).

CK7 (Keratin, type II cytoskeletal 7) is a protein that in humans is encoded by the KRT7 gene. CK7 is a member of the keratin family. It is specifically expressed in the simple epithelia lining the cavities of the internal organs and in the gland ducts and blood vessels. The protein encoded by this gene is a member of the keratin gene family. The type II cytokeratins consist of basic or neutral proteins which are arranged in pairs of heterotypic keratin chains coexpressed during differentiation of simple and stratified epithelial tissues. This type II cytokeratin is specifically expressed in the simple epithelia lining the cavities of the internal organs and in the gland ducts and blood vessels. The genes encoding the type II cytokeratins are clustered in a region of chromosome 12q12-q13. Alternative splicing may result in several transcript variants; however, not all variants have been fully described.

Target: Keratin, Type II Cytoskeletal 7 (KRT7)

Clonality: Monoclonal

Reactivity: Human

Tested Applications: ELISA, WB, FCM

Host: Mouse

Recommended dilutions: ELISA: 1/10000, WB: 1/500 - 1/2000, FCM: 1/200 - 1/400. Optimal dilutions/concentrations should be determined by the end user.

Conjugation: Unconjugated

Immunogen: Purified recombinant fragment of human CK7 expressed in E. coli.

Datasheet

Version: 2.0.0
Revision date: 02 Jun 2025



Isotype:	IgG ₁
Form:	Liquid
Purification:	Unpurified ascites.
Storage:	Aliquot and store at -20°C. Avoid repeated freeze/thaw cycles.
UniProt Primary AC:	P08729 (UniProt , ExPASy)
Gene Symbol:	KRT7
GeneID:	3855
OMIM:	148059
HGNC:	6445
KEGG:	hsa:3855
Ensembl:	ENSG00000135480
String:	9606.ENSP00000329243
Molecular Weight:	51 kDa
Buffer:	Ascitic fluid containing 0.03% sodium azide.
Concentration:	Not determined.
Note:	THIS PRODUCT IS FOR RESEARCH USE ONLY. NOT FOR USE IN DIAGNOSTIC, THERAPEUTIC OR COSMETIC PROCEDURES. NOT FOR HUMAN OR ANIMAL CONSUMPTION.