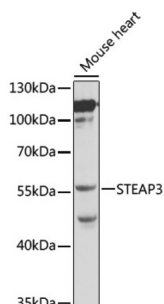


## STEAP3 Metalloreductase (STEAP3) Antibody

Catalogue No.: abx000818



Western blot analysis of lysates from mouse heart, using STEAP3 Antibody at 1/1000 dilution. Secondary antibody: HRP-conjugated Goat anti-Rabbit IgG (H+L) at 1/10000 dilution. Lysates/proteins: 25 µg per lane. Blocking buffer: 3% nonfat dry milk in TBST. Exposure time: 60s.

STEAP3 Antibody is a Rabbit Polyclonal antibody against STEAP3. Caspases modulate apoptosis in various ways. Specifically, Caspase-3, a death protease, is instrumental in cleaving cellular proteins, dismantling the cell and forming apoptotic bodies. pHyde has a potential role as a tumor suppressor by inducing caspase-3-mediated apoptosis and stimulating p53 expression. A dose-dependent increase in caspase-3 activity is observed in transduced pHyde DU145 cells. Furthermore, caspase-3 may be necessary for pHyde-mediated apoptosis. The pHyde gene may upregulate the apoptosis pathway and thus have a potential application in cancer gene therapy. Recombinant pHyde inhibits the growth of human prostate cancer cell lines DU145 and LNCaP in vitro. DU145 tumors may be reduced significantly in vivo when nude mice are injected with recombinant pHyde. pHyde also has a demonstrated growth inhibitory effect on human breast cancer cells. This suggests that pHyde may have a role in inhibiting different tumor types.

<b>Target:</b>	STEAP3 Metalloreductase (STEAP3)
<b>Clonality:</b>	Polyclonal
<b>Reactivity:</b>	Human, Mouse
<b>Tested Applications:</b>	ELISA, WB
<b>Host:</b>	Rabbit
<b>Recommended dilutions:</b>	ELISA: 1 µg/ml, WB: 1/500 - 1/2000. Optimal dilutions/concentrations should be determined by the end user.
<b>Conjugation:</b>	Unconjugated
<b>Immunogen:</b>	Recombinant protein corresponding to STEAP3. The exact sequence is proprietary.
<b>Isotype:</b>	IgG
<b>Form:</b>	Liquid
<b>Purification:</b>	Purified by affinity chromatography.
<b>Storage:</b>	Aliquot and store at -20°C. Avoid repeated freeze/thaw cycles.

# Datasheet

Version: 5.0.0

Revision date: 25 Sep 2025



**UniProt Primary AC:** Q658P3 ([UniProt](#), [ExPASy](#))

**Gene Symbol:** STEAP3

**GeneID:** [55240](#)

**NCBI Accession:** NP\_060704.2

**KEGG:** hsa:55240

**String:** [9606.ENSP00000376822](#)

**Molecular Weight:** Calculated MW: 55 kDa  
Observed MW: 55 kDa

**Buffer:** PBS, pH 7.3, containing 0.02% sodium azide, 50% glycerol.

**Concentration:** > 0.2 mg/ml

**Note:** THIS PRODUCT IS FOR RESEARCH USE ONLY. NOT FOR USE IN DIAGNOSTIC, THERAPEUTIC OR COSMETIC PROCEDURES. NOT FOR HUMAN OR ANIMAL CONSUMPTION.

For Reference Only