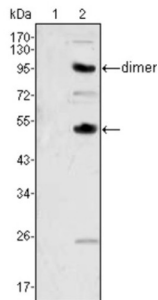
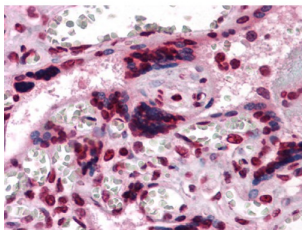


## Macrophage Colony-Stimulating Factor 1 (CSF1) Antibody

Catalogue No.: abx010604



Western blot analysis using CSF1 antibody against human recombinant CSF2 (AA:18-144) (1) and CSF1 (AA:33-496) (2).



Immunohistochemical analysis of paraffin-embedded human Placenta tissues using anti-CSF1 antibody.

CSF1, also known as MCSF, is a four alpha helical bundle cytokine that controls the production, differentiation, and function of macrophages. The active form of the protein is found extracellularly as a disulfide-linked homodimer, and is thought to be produced by proteolytic cleavage of membrane-bound precursors. This protein may be involved in development of the placenta.

**Target:** Macrophage Colony-Stimulating Factor 1 (CSF1)

**Research Area:** Infection Immunity

**Clonality:** Monoclonal

**Reactivity:** Human

**Tested Applications:** ELISA, IHC

**Host:** Mouse

**Recommended dilutions:** ELISA: 1/10000, IHC: 1/200 - 1/1000. Optimal dilutions/concentrations should be determined by the end user.

**Conjugation:** Unconjugated

**Immunogen:** Purified recombinant fragment of human CSF1 expressed in E. coli.

**Isotype:** IgG<sub>1</sub>

# Datasheet

Version: 3.0.0  
Revision date: 19 Jun 2025



Form:	Liquid
Purification:	Unpurified ascites.
Storage:	Aliquot and store at -20°C. Avoid repeated freeze/thaw cycles.
UniProt Primary AC:	P09603 ( <a href="#">UniProt</a> , <a href="#">ExPASy</a> )
Gene Symbol:	CSF1
GeneID:	<a href="#">1435</a>
OMIM:	<a href="#">120420</a>
HGNC:	2432
KEGG:	hsa:1435
Ensembl:	ENSG00000184371
String:	<a href="#">9606.ENSP00000327513</a>
Molecular Weight:	60 kDa
Buffer:	Ascitic fluid containing 0.03% sodium azide.
Concentration:	Not determined.
Note:	THIS PRODUCT IS FOR RESEARCH USE ONLY. NOT FOR USE IN DIAGNOSTIC, THERAPEUTIC OR COSMETIC PROCEDURES. NOT FOR HUMAN OR ANIMAL CONSUMPTION.