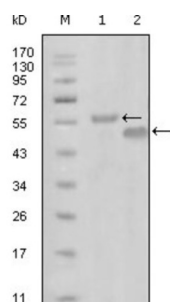


EPH Receptor A6 (EphA6) Antibody

Catalogue No.: abx010725



Western blot analysis using EphA6 antibody against truncated MBP-EphA6 recombinant protein (1) and truncated GST-EphA6 (aa695-795) recombinant protein (2).

EphA6: EPH receptor A6. The Eph subfamily represents the largest group of receptor protein tyrosine kinases identified to date. While the biological activities of these receptors have yet to be determined, there is increasing evidence that they are involved in central nervous system function and in development. The Eph subfamily receptors of human origin (and their murine/avian homologs) include EphA1 (Eph), EphA2 (Eck), EphA3 (Hek4), EphA4 (Hek8), EphA5 (Hek7), EphA6 (Hek12), EphA7 (Hek11/MDK1), EphA8 (Hek3), EphB1 (Hek6), EphB2 (Hek5), EphB3 (Cek10, Hek2), EphB4 (Htk), EphB5 (Hek9) and EphB6 (Mep). Ligands for Eph receptors include ephrin-A4 (LERK-4) which binds EphA3 and EphB1. Ephrin-A2 (ELF-1) has been described as the ligand for EphA4, ephrin-A3 (Ehk1-L) as the ligand for EphA5 and ephrin-B2 (Htk-L) as the ligand for EphB4 (Htk).

Target: EPH Receptor A6 (EphA6)

Clonality: Monoclonal

Reactivity: Human

Tested Applications: ELISA

Host: Mouse

Recommended dilutions: ELISA: 1/10000. Optimal dilutions/concentrations should be determined by the end user.

Conjugation: Unconjugated

Immunogen: Purified recombinant fragment of EphA6 (aa695-795) expressed in E. coli.

Isotype: IgG₁

Form: Liquid

Purification: Unpurified ascites.

Storage: Aliquot and store at -20°C. Avoid repeated freeze/thaw cycles.

Datasheet

Version: 3.0.0

Revision date: 18 Jun 2025



UniProt Primary AC: Q9UF33 ([UniProt](#), [ExPASy](#))

Gene Symbol: EPHA6

GeneID: [285220](#)

OMIM: [600066](#)

HGNC: 19296

Ensembl: ENSG00000080224

String: [9606.ENSP00000374323](#)

Molecular Weight: 116 kDa

Buffer: Ascitic fluid containing 0.03% sodium azide.

Concentration: Not determined.

Note: THIS PRODUCT IS FOR RESEARCH USE ONLY. NOT FOR USE IN DIAGNOSTIC, THERAPEUTIC OR COSMETIC PROCEDURES. NOT FOR HUMAN OR ANIMAL CONSUMPTION.

For Reference Only