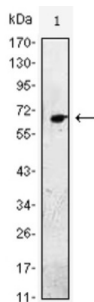
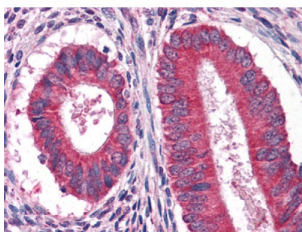


Pro-Epidermal Growth Factor (EGF) Antibody

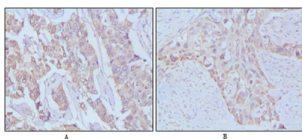
Catalogue No.: abx010731



Western blot analysis using EGF antibody against EGF-hlgGFc transfected HEK293 cell lysate.



Immunohistochemical analysis of paraffin-embedded human breast cancer, Lung breast tissues using EGF antibody.



Immunohistochemical analysis of paraffin-embedded human Uterus tissues using anFtEG antibody.

Epidermal growth factor has a profound effect on the differentiation of specific cells in vivo and is a potent mitogenic factor for a variety of cultured cells of both ectodermal and mesodermal origin. The EGF precursor is believed to exist as a membrane-bound molecule which is proteolytically cleaved to generate the 53-amino acid peptide hormone that stimulates cells to divide.

Target: Pro-Epidermal Growth Factor (EGF)

Clonality: Monoclonal

Reactivity: Human

Tested Applications: ELISA, IHC

Host: Mouse

Recommended dilutions: ELISA: 1/10000, IHC: 1/200 - 1/1000. Optimal dilutions/concentrations should be determined by the end user.

Datasheet

Version: 4.0.0
Revision date: 24 Aug 2025



Conjugation:	Unconjugated
Immunogen:	Purified recombinant fragment of human EGF expressed in E. coli.
Isotype:	IgG ₁
Form:	Liquid
Purification:	Unpurified ascites.
Storage:	Aliquot and store at -20°C. Avoid repeated freeze/thaw cycles.
UniProt Primary AC:	P01133 (UniProt , ExPASy)
Gene Symbol:	EGF
GeneID:	1950
OMIM:	131530
HGNC:	3229
KEGG:	hsa:1950
Ensembl:	ENSG00000138798
String:	9606.ENSP00000265171
Molecular Weight:	134 kDa
Buffer:	Ascitic fluid containing 0.03% sodium azide.
Concentration:	Not determined.
Note:	THIS PRODUCT IS FOR RESEARCH USE ONLY. NOT FOR USE IN DIAGNOSTIC, THERAPEUTIC OR COSMETIC PROCEDURES. NOT FOR HUMAN OR ANIMAL CONSUMPTION.