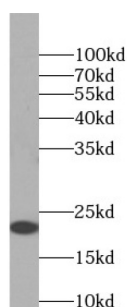
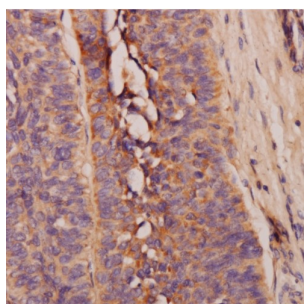


Fibrillin 1 (FBN1) Antibody

Catalogue No.: abx010773



WB analysis of recombinant proteins, using asprosin antibody (1/1000 dilution).



IHC-P analysis of human liver cancer tissue, using asprosin antibody (1/400 dilution).

Fibrillin 1 (FBN1) Antibody is a Rabbit Polyclonal antibody for the detection of Asprosin.

Hormone that targets the liver to increase plasma glucose levels. Secreted by white adipose tissue and circulates in the plasma. Acts in response to fasting and promotes blood glucose elevation by binding to the surface of hepatocytes. Promotes hepatocyte glucose release by activating the protein kinase A activity in the liver, resulting in rapid glucose release into the circulation.

Target: Fibrillin 1 (FBN1)

Clonality: Polyclonal

Reactivity: Human, Mouse

Tested Applications: ELISA, WB, IHC

Host: Rabbit

Recommended dilutions: WB: 1/500 - 1/2000, IHC: 1/200 - 1/500. Optimal dilutions/concentrations should be determined by the end user.

Conjugation: Unconjugated

Immunogen: asprosin

Isotype: IgG

Datasheet

Version: 2.0.0
Revision date: 22 Jun 2025



Form:	Liquid
Purity:	≥ 95% (SDS-PAGE)
Purification:	Purified by immunogen affinity chromatography.
Storage:	Aliquot and store at -20°C. Avoid repeated freeze/thaw cycles.
Validity:	12 months.
UniProt Primary AC:	P35555 (UniProt , ExPASy)
Gene Symbol:	FBN1
GeneID:	2200
OMIM:	102370
HGNC:	3603
KEGG:	hsa:2200
String:	9606.ENSP00000325527
Molecular Weight:	Observed MW: 20 kDa
Buffer:	PBS, pH 7.3, with 0.02% sodium azide and 50% glycerol.
Concentration:	2 mg/ml
Note:	THIS PRODUCT IS FOR RESEARCH USE ONLY. NOT FOR USE IN DIAGNOSTIC, THERAPEUTIC OR COSMETIC PROCEDURES. NOT FOR HUMAN OR ANIMAL CONSUMPTION.