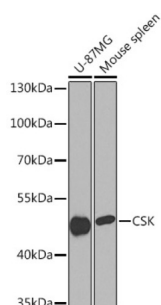
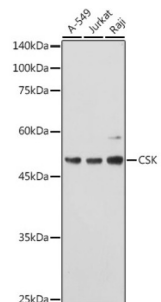


## Tyrosine-Protein Kinase CSK (CSK) Antibody

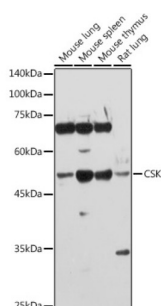
Catalogue No.: abx000843



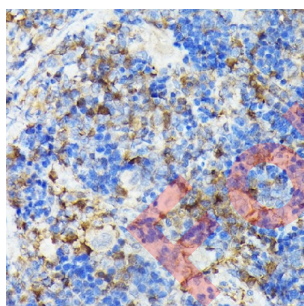
Western blot analysis of extracts of various cell lines using CSK Antibody (1/1000 dilution).



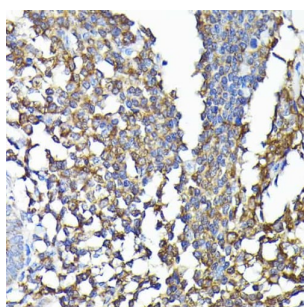
Western blot analysis of extracts of various cell lines using CSK Antibody (1/1000 dilution).



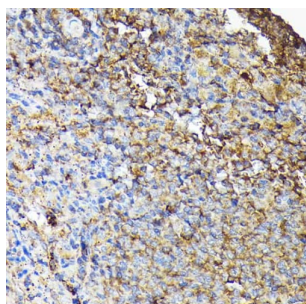
Western blot analysis of extracts of various cell lines using CSK Antibody (1/1000 dilution).



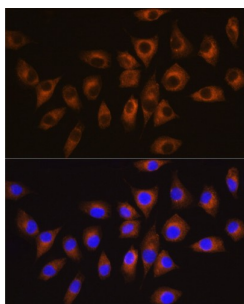
Immunohistochemistry of paraffin-embedded rat spleen using [KO Validated] CSK Antibody (1/100 dilution, 40x lens). High pressure antigen retrieval was performed in 10 mM citrate buffer pH 6.0 before commencing with IHC staining protocol.



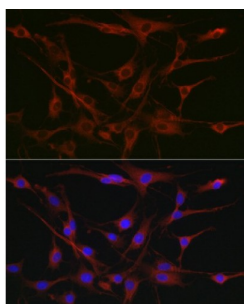
Immunohistochemistry of paraffin-embedded human colon carcinoma using [KO Validated] CSK Antibody (1/100 dilution, 40x lens). High pressure antigen retrieval was performed in 10 mM citrate buffer pH 6.0 before commencing with IHC staining protocol.



Immunohistochemistry of paraffin-embedded mouse spleen using [KO Validated] CSK Antibody (1/100 dilution, 40x lens). High pressure antigen retrieval was performed in 10 mM citrate buffer pH 6.0 before commencing with IHC staining protocol.



Immunofluorescence analysis of L929 cells using CSK Antibody (1/100 dilution, 40x lens). Blue: DAPI for nuclear staining.



Immunofluorescence analysis of C6 cells using [KO Validated] CSK Antibody (1/100 dilution, 40x lens). Blue: DAPI for nuclear staining.

CSK Antibody is a Rabbit Polyclonal antibody against CSK. CSK (Tyrosine-protein kinase CSK) is also named as C-Src kinase, protein-tyrosine kinase CYL and belongs to the protein kinase superfamily. Csk is a non-receptor tyrosine kinase with a molecular mass of 50 kDa. It contains the SH3 and SH2 domains in its N-terminus and a kinase domain in its C-terminus. It negatively regulates the kinase activity of SFKs and plays an important role in physiological functions via signaling pathways for cell proliferation, differentiation, adhesion, and migration (PMID:23548896). Csk may play a role in tumor suppression by inhibiting the oncogenic activity of SFKs. Indeed, overexpression of Csk can inhibit tumor growth of human colon cancer cells (PMID:23139636). This protein can be autophosphorylated (PMID:11181701). This antibody is specific to CSK.

**Target:** Tyrosine-Protein Kinase CSK (CSK)

**Clonality:** Polyclonal

**Reactivity:** Human, Mouse, Rat

**Tested Applications:** WB, IHC, IF/ICC

**Host:** Rabbit

**Recommended dilutions:** WB: 1/500 - 1/2000, IHC-P: 1/50 - 1/200, IF/ICC: 1/50 - 1/200. Not tested in IHC-F. Optimal dilutions/concentrations should be determined by the end user.

# Datasheet

Version: 4.0.0  
Revision date: 06 Sep 2025



<b>Conjugation:</b>	Unconjugated
<b>Immunogen:</b>	Recombinant fusion protein corresponding to human CSK
<b>Isotype:</b>	IgG
<b>Form:</b>	Liquid
<b>Purification:</b>	Purified by affinity chromatography.
<b>Storage:</b>	Aliquot and store at -20°C. Avoid repeated freeze/thaw cycles.
<b>UniProt Primary AC:</b>	P41240 ( <a href="#">UniProt</a> , <a href="#">ExPASy</a> )
<b>Gene Symbol:</b>	CSK
<b>GeneID:</b>	<a href="#">1445</a>
<b>NCBI Accession:</b>	NP_001120662.1
<b>KEGG:</b>	hsa:1445
<b>String:</b>	<a href="#">9606.ENSP00000220003</a>
<b>Molecular Weight:</b>	Calculated MW: 50 kDa Observed MW: 50 kDa
<b>Buffer:</b>	PBS, pH 7.3, containing 0.01% thiomersal, 50% glycerol.
<b>Concentration:</b>	1 mg/ml
<b>Note:</b>	THIS PRODUCT IS FOR RESEARCH USE ONLY. NOT FOR USE IN DIAGNOSTIC, THERAPEUTIC OR COSMETIC PROCEDURES. NOT FOR HUMAN OR ANIMAL CONSUMPTION.