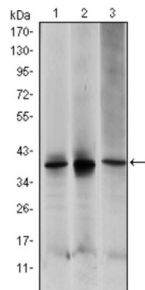
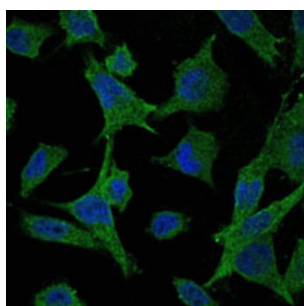


Dual Specificity Mitogen-Activated Protein Kinase Kinase 6 (MAP2K6) Antibody

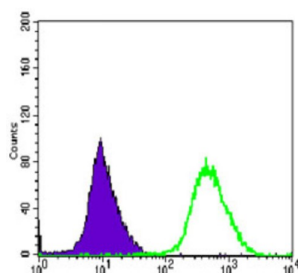
Catalogue No.: abx010917



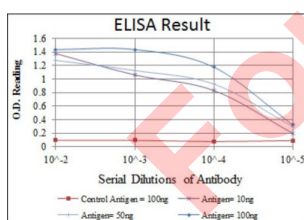
Western blot analysis using MAP2K6 antibody against HepG2 (1), MCF-7 (2) and NIH/3T3 (3) cell lysate.



Immunofluorescence analysis of HeLa cells using MAP2K6 antibody (green). Blue: DRAQ5 fluorescent DNA dye.



Flow cytometric analysis of HeLa cells using MAP2K6 antibody (green) and negative control (purple).



Red: Control Antigen (100ng) ; Purple: Antigen (10ng) ; Green: Antigen (50ng) ; Blue: Antigen (100ng).

his gene encodes a member of the dual specificity protein kinase family, which functions as a mitogen-activated protein (MAP) kinase kinase. MAP kinases, also known as extracellular signal-regulated kinases (ERKs), act as an integration point for multiple biochemical signals. This protein phosphorylates and activates p38 MAP kinase in response to inflammatory cytokines or environmental stress.

Target:

Dual Specificity Mitogen-Activated Protein Kinase Kinase 6 (MAP2K6)

Datasheet

Version: 2.0.0
Revision date: 13 Jun 2025



Clonality:	Monoclonal
Reactivity:	Human, Mouse
Tested Applications:	ELISA, WB, IF/ICC, FCM
Host:	Mouse
Recommended dilutions:	ELISA: 1/10000, WB: 1/500 - 1/2000, IF/ICC: 1/200 - 1/1000, FCM: 1/200 - 1/400. Optimal dilutions/concentrations should be determined by the end user.
Conjugation:	Unconjugated
Immunogen:	Purified recombinant fragment of human MAP2K6 expressed in E. coli.
Isotype:	IgG ₁
Form:	Liquid
Purification:	Unpurified ascites.
Storage:	Aliquot and store at -20°C. Avoid repeated freeze/thaw cycles.
UniProt Primary AC:	P52564 (UniProt , ExPASy)
GeneID:	5608
Molecular Weight:	38 kDa
Buffer:	Ascitic fluid containing 0.03% sodium azide.
Concentration:	Not determined.
Note:	THIS PRODUCT IS FOR RESEARCH USE ONLY. NOT FOR USE IN DIAGNOSTIC, THERAPEUTIC OR COSMETIC PROCEDURES. NOT FOR HUMAN OR ANIMAL CONSUMPTION.