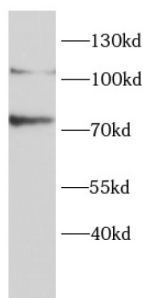
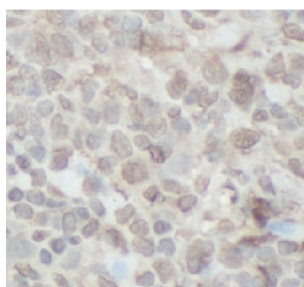


## Hormone-Sensitive Lipase (LIPE) Antibody

Catalogue No.: abx010939



WB analysis of NIH/3T3 cells, using LIPE antibody (1/500 dilution).



IHC-P analysis of human testis tissue, using LIPE antibody (1/100 dilution).

Hormone-Sensitive Lipase (LIPE) Antibody is a Rabbit Polyclonal antibody for the detection of LIPE.

LIPE, also named as HSL and LHS, belongs to the 'GDXG' lipolytic enzyme family. In adipose tissue and heart, it primarily hydrolyzes stored triglycerides to free fatty acids, while in steroidogenic tissues, it principally converts cholesteryl esters to free cholesterol for steroid hormone production. LIPE has two isoforms with the molecular mass of 117 kDa and 84 kDa.

**Target:** Hormone-Sensitive Lipase (LIPE)

**Clonality:** Polyclonal

**Reactivity:** Human, Mouse, Rat

**Tested Applications:** ELISA, WB, IHC

**Host:** Rabbit

**Recommended dilutions:** WB: 1/200 - 1/2000, IHC: 1/50 - 1/500. Optimal dilutions/concentrations should be determined by the end user.

**Conjugation:** Unconjugated

**Immunogen:** lipase, hormone-sensitive

**Isotype:** IgG

# Datasheet

Version: 2.0.0  
Revision date: 07 Apr 2025



<b>Form:</b>	Liquid
<b>Purity:</b>	≥ 95% (SDS-PAGE)
<b>Purification:</b>	Purified by immunogen affinity chromatography.
<b>Storage:</b>	Aliquot and store at -20°C. Avoid repeated freeze/thaw cycles.
<b>Validity:</b>	12 months.
<b>UniProt Primary AC:</b>	Q05469 ( <a href="#">UniProt</a> , <a href="#">ExPASy</a> )
<b>Gene Symbol:</b>	LIPE
<b>GeneID:</b>	<a href="#">3991</a>
<b>OMIM:</b>	<a href="#">151750</a>
<b>HGNC:</b>	6621
<b>KEGG:</b>	hsa:3991
<b>Ensembl:</b>	ENSG00000079435
<b>String:</b>	<a href="#">9606.ENSP00000244289</a>
<b>Molecular Weight:</b>	Observed MW: 70-117 kDa
<b>Buffer:</b>	PBS, pH 7.3, with 0.02% sodium azide and 50% glycerol.
<b>Concentration:</b>	2 mg/ml
<b>Note:</b>	THIS PRODUCT IS FOR RESEARCH USE ONLY. NOT FOR USE IN DIAGNOSTIC, THERAPEUTIC OR COSMETIC PROCEDURES. NOT FOR HUMAN OR ANIMAL CONSUMPTION.