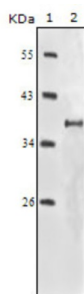
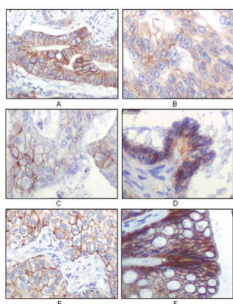


Insulin Like Growth Factor 1 Receptor (IGF1R) Antibody

Catalogue No.: abx010963



Western blot analysis using IGF1R-Beta antibody against truncated IGF1R-Beta recombinant protein.



Immunohistochemical analysis of paraffin-embedded human gastric adenocarcinoma (A), colon adenocarcinoma (B), endometrial carcinoma (uterus) (C), ovary adenocarcinoma (D), lung squamous cell carcinoma (E), stomach epithelium mucosae (F), showing membrane localization using IGF1R-Beta antibody with DAB staining.

IGF1R (insulin-like growth factor 1 receptor), a transmembrane receptor tyrosine kinase, is widely expressed in many cell types within fetal and postnatal tissues, and in many cell lines. Upon binding to its ligands, IGF-I and IGF-II, receptor autophosphorylation occurs. The triple tyrosine cluster within the kinase domain (Tyr1131, Tyr1135 and Tyr1136) is the earliest major site of autophosphorylation. Phosphorylation of these three tyrosine residues is necessary for kinase activation. Insulin receptors (IRs) share significant similarity with IGF1 receptors in both structure and function, including an equivalent triple tyrosine cluster within the activation loop of the kinase domain (Tyr1146, Tyr1150 and Tyr1151). Tyrosine autophosphorylation of insulin receptor is one of the earliest cellular responses to insulin stimulation. Autophosphorylation begins with phosphorylation of Tyr1146 and either Tyr1150 or Tyr1151. Full kinase activation requires the triple tyrosine phosphorylation.

Target: Insulin Like Growth Factor 1 Receptor (IGF1R)

Clonality: Monoclonal

Reactivity: Human

Tested Applications: ELISA, IHC

Host: Mouse

Recommended dilutions: ELISA: 1/10000, IHC: 1/200 - 1/1000. Optimal dilutions/concentrations should be determined by the end user.

Conjugation: Unconjugated

Immunogen: Purified recombinant fragment of IGF1R-Beta expressed in E. coli.

Datasheet

Version: 3.0.0
Revision date: 04 Jul 2025



Isotype:	IgG _{2b}
Form:	Liquid
Purification:	Unpurified ascites.
Storage:	Aliquot and store at -20°C. Avoid repeated freeze/thaw cycles.
UniProt Primary AC:	P08069 (UniProt , ExPASy)
Gene Symbol:	IGF1R
GeneID:	3480
OMIM:	147370
HGNC:	5465
KEGG:	hsa:3480
Ensembl:	ENSG00000140443
String:	9606.ENSP00000268035
Molecular Weight:	96 kDa
Buffer:	Ascitic fluid containing 0.03% sodium azide.
Concentration:	Not determined.
Note:	THIS PRODUCT IS FOR RESEARCH USE ONLY. NOT FOR USE IN DIAGNOSTIC, THERAPEUTIC OR COSMETIC PROCEDURES. NOT FOR HUMAN OR ANIMAL CONSUMPTION.