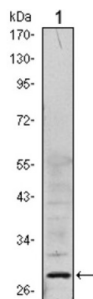
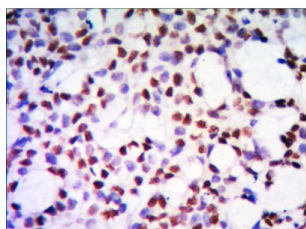


Acidic Leucine-Rich Nuclear Phosphoprotein 32 Family Member A (ANP32A) Antibody

Catalogue No.: abx010980



Western blot analysis using PP32 antibody against Hela (1) cell lysate.



Immunohistochemical analysis of paraffin-embedded human kidney tissue using PP32 antibody with DAB staining.

Implicated in a number of cellular processes, including proliferation, differentiation, caspase-dependent and caspase-independent apoptosis, suppression of transformation (tumor suppressor), inhibition of protein phosphatase 2A, regulation of mRNA trafficking and stability in association with ELAVL1, and inhibition of acetyltransferases as part of the INHAT (inhibitor of histone acetyltransferases) complex. Plays a role in E4F1-mediated transcriptional repression.

Target: Acidic Leucine-Rich Nuclear Phosphoprotein 32 Family Member A (ANP32A)

Clonality: Monoclonal

Reactivity: Human

Tested Applications: ELISA, WB, IHC

Host: Mouse

Recommended dilutions: ELISA: 1/10000, WB: 1/500 - 1/2000, IHC: 1/200 - 1/1000. Optimal dilutions/concentrations should be determined by the end user.

Conjugation: Unconjugated

Immunogen: Purified recombinant fragment of human PP32 expressed in E. coli.

Isotype: IgG₁

Datasheet

Version: 5.0.0

Revision date: 05 Sep 2025



Form:	Liquid
Purification:	Unpurified ascites.
Storage:	Aliquot and store at -20°C. Avoid repeated freeze/thaw cycles.
UniProt Primary AC:	P39687 (UniProt , ExPASy)
Gene Symbol:	ANP32A
GeneID:	8125
OMIM:	600832
HGNC:	13233
KEGG:	hsa:8125
Ensembl:	ENSG00000140350
String:	9606.ENSP00000417864
Molecular Weight:	28 kDa
Buffer:	Ascitic fluid containing 0.03% sodium azide.
Concentration:	Not determined.
Note:	THIS PRODUCT IS FOR RESEARCH USE ONLY. NOT FOR USE IN DIAGNOSTIC, THERAPEUTIC OR COSMETIC PROCEDURES. NOT FOR HUMAN OR ANIMAL CONSUMPTION.