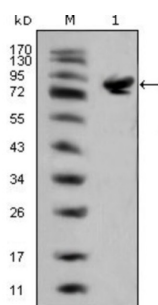
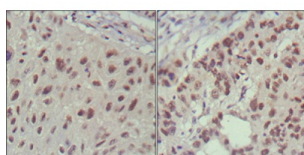


Insulin Gene Enhancer Protein ISL-1 (ISL1) Antibody

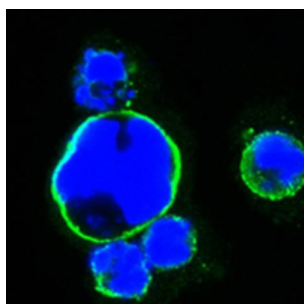
Catalogue No.: abx011019



Western blot analysis using ISL1 antibody against full-length ISL1 (aa1-349) -hlgGfc transfected HEK293 cell lysate (1).



Immunohistochemical analysis of paraffin-embedded human lung cancer (left) and cervical carcinoma (right), showing nuclear localization using ISL1 antibody with DAB staining.



Confocal immunofluorescence analysis of HEK293 cells transfected with full-length ISL1-hlgGfc using ISL1 antibody (green). Blue: DRAQ5 fluorescent DNA dye.

ISL1 (ISL1 transcription factor, LIM/homeodomain) is a member of the LIM/homeodomain family of transcription factors. It binds to the enhancer region of the insulin gene, among others, and may play an important role in regulating insulin gene expression. It is central to the development of pancreatic cell lineages and may also be required for motor neuron generation. Islet-1 expression defines cardiac progenitor cell populations and is required for normal cardiac development and asymmetry. Mutations in this gene have been associated with maturity-onset diabetes of the young.

Target: Insulin Gene Enhancer Protein ISL-1 (ISL1)

Clonality: Monoclonal

Reactivity: Human

Tested Applications: ELISA, IHC, IF/ICC

Host: Mouse

Datasheet

Version: 2.0.0
Revision date: 25 Jun 2025



Recommended dilutions: ELISA: 1/10000, IHC: 1/200 - 1/1000, IF/ICC: 1/200 - 1/1000. Optimal dilutions/concentrations should be determined by the end user.

Conjugation: Unconjugated

Immunogen: Purified recombinant fragment of human ISL1 expressed in E. coli.

Isotype: IgG₁

Form: Liquid

Purification: Unpurified ascites.

Storage: Aliquot and store at -20°C. Avoid repeated freeze/thaw cycles.

UniProt Primary AC: P61371 ([UniProt](#), [ExPASy](#))

Gene Symbol: ISL1

GeneID: [3670](#)

OMIM: [600366](#)

HGNC: 6132

KEGG: hsa:3670

Ensembl: ENSG00000016082

String: [9606.ENSP00000230658](#)

Molecular Weight: 39 kDa

Buffer: Ascitic fluid containing 0.03% sodium azide.

Concentration: Not determined.

Note: THIS PRODUCT IS FOR RESEARCH USE ONLY. NOT FOR USE IN DIAGNOSTIC, THERAPEUTIC OR COSMETIC PROCEDURES. NOT FOR HUMAN OR ANIMAL CONSUMPTION.