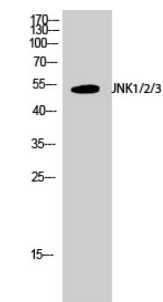
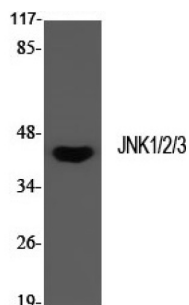


## JNK1 / 2 / 3 Antibody

Catalogue No.: abx011033



Western Blot analysis of HeLa cells, using JNK1/2/3 Antibody.



Western Blot analysis of Rat Muscle Tissue, using JNK1/2/3 Antibody.

JNK1/2/3 Antibody detects endogenous levels of total JNK1/2/3. JNK3 a protein kinase of the MAPK family that is potentially activated by a variety of environmental stress and pro-inflammatory cytokines. Brain-selective JNK isoform.

**Target:** JNK1/2/3

**Clonality:** Polyclonal

**Reactivity:** Human, Mouse, Rat

**Tested Applications:** ELISA, WB, IHC, IF/ICC

**Host:** Rabbit

**Recommended dilutions:** ELISA: 1/10000, WB: 1/500 - 1/2000, IHC: 1/100 - 1/300, IF/ICC: 1/200 - 1/1000. Optimal dilutions/concentrations should be determined by the end user.

**Conjugation:** Unconjugated

**Immunogen:** Synthesized peptide derived from human JNK1/2/3 around the non-phosphorylation site of T183.

**Purification:** Purified by affinity chromatography.

**Storage:** Aliquot and store at -20°C. Avoid repeated freeze/thaw cycles.

# Datasheet

Version: 1.0.0

Revision date: 23 May 2025



**UniProt Primary AC:** P45983 ([UniProt](#), [ExPASy](#)) P45984 ([UniProt](#), [ExPASy](#)) P53779 ([UniProt](#), [ExPASy](#))

**Molecular Weight:** 44 kDa

**Buffer:** PBS, containing 50% glycerol, 0.5% BSA and 0.02% sodium azide.

**Concentration:** 1 mg/ml

**Note:** THIS PRODUCT IS FOR RESEARCH USE ONLY. NOT FOR USE IN DIAGNOSTIC, THERAPEUTIC OR COSMETIC PROCEDURES. NOT FOR HUMAN OR ANIMAL CONSUMPTION.

For Reference Only