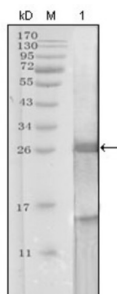
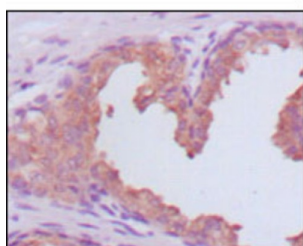


## PSA (KLK3) Antibody

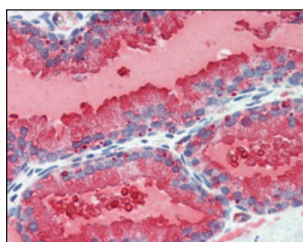
Catalogue No.: abx011055



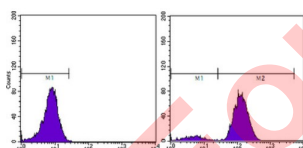
Western blot analysis using KLK3 antibody against truncated KLK3 recombinant protein.



Immunohistochemical analysis of paraffin-embedded human prostate carcinoma tissues, showing cytoplasmic localization using KLK3 antibody with DAB staining.



Immunohistochemical analysis of paraffin-embedded human prostate tissues using KLK3 antibody with DAB staining.



Flow cytometric analysis of PC-3 cells using KLK3 antibody (right) and negative control (left).

Kallikrein-related peptidase 3. Kallikreins are a subgroup of serine proteases having diverse physiological functions. Growing evidence suggests that many kallikreins are implicated in carcinogenesis and some have potential as novel cancer and other disease biomarkers. This gene is one of the fifteen kallikrein subfamily members located in a cluster on chromosome 19. Its protein product is a protease present in seminal plasma. It is thought to function normally in the liquefaction of seminal coagulum, presumably by hydrolysis of the high molecular mass seminal vesicle protein. Serum level of this protein, called PSA in the clinical setting, is useful in the diagnosis and monitoring of prostatic carcinoma. Alternate splicing of this gene generates several transcript variants encoding different isoforms.

# Datasheet

Version: 4.0.0  
Revision date: 25 May 2025



Target:	PSA (KLK3)
Clonality:	Monoclonal
Reactivity:	Human
Tested Applications:	ELISA, IHC, FCM
Host:	Mouse
Recommended dilutions:	ELISA: 1/10000, IHC: 1/200 - 1/1000, FCM: 1/200 - 1/400. Optimal dilutions/concentrations should be determined by the end user.
Conjugation:	Unconjugated
Immunogen:	Purified recombinant fragment of KLK3 (aa26-251) expressed in E. coli.
Isotype:	IgG <sub>1</sub>
Form:	Liquid
Purification:	Unpurified ascites.
Storage:	Aliquot and store at -20°C. Avoid repeated freeze/thaw cycles.
UniProt Primary AC:	O14492 ( <a href="#">UniProt</a> , <a href="#">ExPASy</a> )
Gene Symbol:	SH2B2
GeneID:	<a href="#">354</a>
OMIM:	<a href="#">605300</a>
HGNC:	17381
KEGG:	hsa:10603
Ensembl:	ENSG00000160999
String:	<a href="#">9606.ENSP00000440273</a>
Molecular Weight:	68 kDa
Buffer:	Ascitic fluid containing 0.03% sodium azide.

# Datasheet

Version: 4.0.0

Revision date: 25 May 2025



**Concentration:** Not determined.

**Note:** THIS PRODUCT IS FOR RESEARCH USE ONLY. NOT FOR USE IN DIAGNOSTIC, THERAPEUTIC OR COSMETIC PROCEDURES. NOT FOR HUMAN OR ANIMAL CONSUMPTION.

For Reference Only