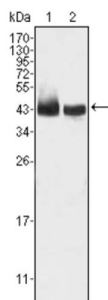


Krueppel-Like Factor 15 (KLF15) Antibody

Catalogue No.: abx011075



Western blot analysis using KLF15 antibody against HepG2 (1) and SMMC-7721 (2) cell lysate.

KLF15 (Krueppel-like factor 15), also known as KKLf, DKFZp779M1320. Entrez Protein NP054798. Sequence analysis predicted that the 416 amino acid KLF15 protein, which is 84% identical to the rat Klf15 protein, contains 3 zinc finger motifs at its C terminus, N-terminal serine-rich stretches, and a central proline-rich segment. KLF15, a kidney-enriched Krueppel-like factor, is a transcriptional activator that binds the CLCNKA promoter. KLF15, which is a nuclear protein, is expressed primarily in liver, heart, skeletal muscle and kidney tissues but is not detected in lymphoid tissues or bone marrow. KLF15 is an important regulator of GLUT4 in both adipose and muscle tissues.

Target:	Krueppel-Like Factor 15 (KLF15)
Clonality:	Monoclonal
Reactivity:	Human
Tested Applications:	ELISA, WB
Host:	Mouse
Recommended dilutions:	ELISA: 1/10000, WB: 1/500 - 1/2000. Optimal dilutions/concentrations should be determined by the end user.
Conjugation:	Unconjugated
Immunogen:	Purified recombinant fragment of human KLF15 expressed in E. coli.
Isotype:	IgG ₁
Form:	Liquid
Purification:	Unpurified ascites.
Storage:	Aliquot and store at -20°C. Avoid repeated freeze/thaw cycles.
UniProt Primary AC:	Q9UIH9 (UniProt , ExPASy)

Datasheet

Version: 2.0.0

Revision date: 21 Jun 2025



Gene Symbol: KLF15

GeneID: [28999](#)

OMIM: [606465](#)

HGNC: 14536

Ensembl: ENSG00000163884

String: [9606.ENSP00000296233](#)

Molecular Weight: 44 kDa

Buffer: Ascitic fluid containing 0.03% sodium azide.

Concentration: Not determined.

Note: THIS PRODUCT IS FOR RESEARCH USE ONLY. NOT FOR USE IN DIAGNOSTIC, THERAPEUTIC OR COSMETIC PROCEDURES. NOT FOR HUMAN OR ANIMAL CONSUMPTION.

For Reference Only