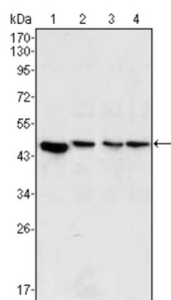
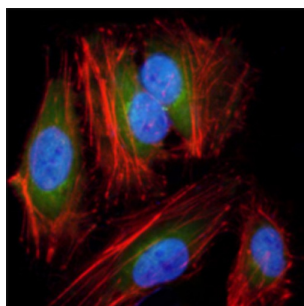


Mitogen-Activated Protein Kinase Kinase 2 (MAP2K2) Antibody

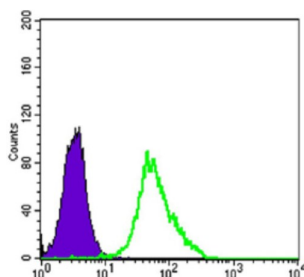
Catalogue No.: abx011107



Western blot analysis using MAP2K2 antibody against PC-12 (1), Jurkat (2), Hela (3) and NIH/3T3 (4) cell lysate.



Immunofluorescence analysis of Hela cells using anti-MAP2K2 antibody (green). Red: Actin filaments have been labeled with DY-554 phalloidin. Blue: DRAQ5 fluorescent DNA dye.



Flow cytometric analysis of Hela cells using anti-MAP2K2 antibody (green) and negative control (purple).

MAP2K2, also called MEK2, it is a dual specificity protein kinase that belongs to the MAP kinase kinase family. This kinase is known to play a critical role in mitogen growth factor signal transduction. It phosphorylates and thus activates MAPK1/ERK2 and MAPK2/ERK3. The activation of this kinase itself is dependent on the Ser/Thr phosphorylation by MAP kinase kinase kinases. Mutations in this gene cause cardiofaciocutaneous syndrome (CFC syndrome), a disease characterized by heart defects, mental retardation, and distinctive facial features similar to those found in Noonan syndrome.

Target: Mitogen-Activated Protein Kinase Kinase 2 (MAP2K2)

Clonality: Monoclonal

Reactivity: Human, Mouse, Rat

Tested Applications: ELISA, WB, IF/ICC, FCM

Host: Mouse

Datasheet

Version: 2.0.0
Revision date: 07 Sep 2025



Recommended dilutions: ELISA: 1/10000, WB: 1/500 - 1/2000, IF/ICC: 1/200 - 1/1000, FCM: 1/200 - 1/400. Optimal dilutions/concentrations should be determined by the end user.

Conjugation: Unconjugated

Immunogen: Purified recombinant fragment of human MAP2K2 expressed in E. coli.

Isotype: IgG₁

Form: Liquid

Purification: Unpurified ascites.

Storage: Aliquot and store at -20°C. Avoid repeated freeze/thaw cycles.

UniProt Primary AC: P36507 ([UniProt](#), [ExPASy](#))

GenelD: [5605](#)

KEGG: hsa:5605

String: [9606.ENSP00000262948](#)

Molecular Weight: 44 kDa

Buffer: Ascitic fluid containing 0.03% sodium azide.

Concentration: Not determined.

Note: THIS PRODUCT IS FOR RESEARCH USE ONLY. NOT FOR USE IN DIAGNOSTIC, THERAPEUTIC OR COSMETIC PROCEDURES. NOT FOR HUMAN OR ANIMAL CONSUMPTION.