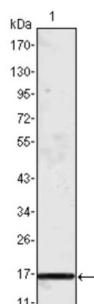


## C-C Motif Chemokine 2 / MCP1 (CCL2) Antibody

Catalogue No.: abx011184



Western blot analysis using CCL2 antibody against truncated CCL2 recombinant protein.

Monocyte chemoattractant protein-1 (CCL2) is a member of the chemokine beta family of cytokines. The protein is structurally related to the CXC subfamily of cytokines. Members of this subfamily are characterized by two cysteines separated by a single amino acid. This cytokine displays chemotactic activity for monocytes and basophils but not for neutrophils or eosinophils. It has been implicated in the pathogenesis of diseases characterized by monocytic infiltrates, like psoriasis, rheumatoid arthritis and atherosclerosis. It binds to chemokine receptors CCR2 and CCR4. It may play a ~~in~~protant role in the initiation and/or progression of pulmonary hypertension (PH). Blockade of a systemic CCL2 signal pathway in vivo may prevent PH.

<b>Target:</b>	C-C Motif Chemokine 2 / MCP1 (CCL2)
<b>Clonality:</b>	Monoclonal
<b>Reactivity:</b>	Human
<b>Tested Applications:</b>	ELISA
<b>Host:</b>	Mouse
<b>Recommended dilutions:</b>	ELISA: 1/10000. Optimal dilutions/concentrations should be determined by the end user.
<b>Conjugation:</b>	Unconjugated
<b>Immunogen:</b>	Purified recombinant fragment of human MCP-1 expressed in E. coli.
<b>Isotype:</b>	IgG <sub>1</sub> Kappa
<b>Form:</b>	Liquid
<b>Purification:</b>	Unpurified ascites.
<b>Storage:</b>	Aliquot and store at -20°C. Avoid repeated freeze/thaw cycles.
<b>UniProt Primary AC:</b>	P13500 ( <a href="#">UniProt</a> , <a href="#">ExPASy</a> )

# Datasheet

Version: 5.0.0

Revision date: 05 Aug 2025



<b>Gene Symbol:</b>	CCL2
<b>GeneID:</b>	<a href="#">6347</a>
<b>OMIM:</b>	<a href="#">158105</a>
<b>NCBI Accession:</b>	NP_002973.1, NM_002982.3
<b>HGNC:</b>	10618
<b>KEGG:</b>	hsa:6347
<b>Ensembl:</b>	ENSG00000108691
<b>String:</b>	<a href="#">9606.ENSP00000225831</a>
<b>Molecular Weight:</b>	13 kDa
<b>Buffer:</b>	Ascitic fluid containing 0.03% sodium azide.
<b>Concentration:</b>	Not determined.
<b>Note:</b>	THIS PRODUCT IS FOR RESEARCH USE ONLY. NOT FOR USE IN DIAGNOSTIC, THERAPEUTIC OR COSMETIC PROCEDURES. NOT FOR HUMAN OR ANIMAL CONSUMPTION.