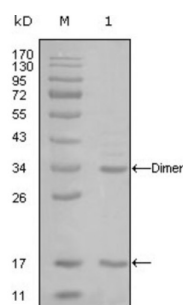


E1A Binding Protein P300 (EP300) Antibody

Catalogue No.: abx011304



Western blot analysis using EP300 antibody against truncated EP300-His recombinant protein (1).

p300 is a histone acetyltransferase and transcriptional co-activator that regulates transcription via chromatin remodeling. Acetylates all four core histones in nucleosomes. Related to CPB (CREB-binding protein), and like CPB can stimulate transcription through activation of CREB. Specifically inhibited by the adenovirus oncoprotein E1A. A co-activator of HIF1A (hypoxia-inducible factor 1 alpha), and thus plays a role in the stimulation of hypoxia-induced genes such as VEGF. Mediates cAMP-gene regulation by binding specifically to phosphorylated CREB protein. Methylated at R580 and R604 in the KIX domain by CARM1, which blocks association with CREB, inhibits CREB signaling and activates the apoptotic response. Also methylated at R2142 by CARM1, which impairs interaction with NCoA2.

Target:	E1A Binding Protein P300 (EP300)
Clonality:	Monoclonal
Reactivity:	Human
Tested Applications:	ELISA
Host:	Mouse
Recommended dilutions:	ELISA: 1/10000. Optimal dilutions/concentrations should be determined by the end user.
Conjugation:	Unconjugated
Immunogen:	Purified recombinant fragment of EP300 expressed in E. coli.
Isotype:	IgG ₁
Form:	Liquid
Purification:	Unpurified ascites.
Storage:	Aliquot and store at -20°C. Avoid repeated freeze/thaw cycles.
UniProt Primary AC:	Q09472 (UniProt , ExPASy)

Datasheet

Version: 3.0.0
Revision date: 24 Jun 2025



Gene Symbol: EP300

GeneID: [2033](#)

OMIM: [602700](#)

HGNC: 3373

KEGG: hsa:2033

Ensembl: ENSG00000100393

String: [9606.ENSP00000263253](#)

Enzyme Commission Number: EC 2.3.1.48

Molecular Weight: 300 kDa

Buffer: Ascitic fluid containing 0.03% sodium azide.

Concentration: Not determined.

Note: THIS PRODUCT IS FOR RESEARCH USE ONLY. NOT FOR USE IN DIAGNOSTIC, THERAPEUTIC OR COSMETIC PROCEDURES. NOT FOR HUMAN OR ANIMAL CONSUMPTION.