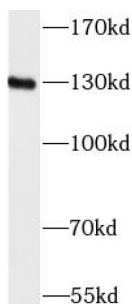
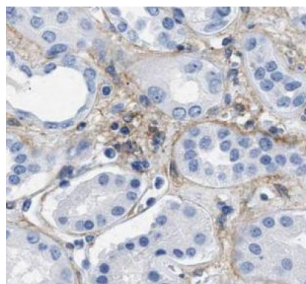


Platelet Endothelial Cell Adhesion Molecule / CD31 (PECAM1) Antibody

Catalogue No.: abx011328



WB analysis of Jurkat cells, using CD31 antibody (1/1000 dilution).



IHC-P analysis of human kidney tissue, using CD31 antibody (1/100 dilution).

Platelet Endothelial Cell Adhesion Molecule / CD31 (PECAM1) Antibody is a Rabbit Polyclonal antibody for the detection of CD31.

The protein encoded by this gene is found on the surface of platelets, monocytes, neutrophils, and some types of T-cells, and makes up a large portion of endothelial cell intercellular junctions. The encoded protein is a member of the immunoglobulin superfamily and is likely involved in leukocyte migration, angiogenesis, and integrin activation.

Target: Platelet Endothelial Cell Adhesion Molecule / CD31 (PECAM1)

Clonality: Polyclonal

Reactivity: Human

Tested Applications: ELISA, WB, IHC, FCM

Host: Rabbit

Recommended dilutions: WB: 1/500 - 1/2000, IHC: 1/500 - 1/2000. Optimal dilutions/concentrations should be determined by the end user.

Conjugation: Unconjugated

Immunogen: platelet/endothelial cell adhesion molecule

Isotype: IgG

Datasheet

Version: 2.0.0
Revision date: 09 Jun 2025



Form:	Liquid
Purity:	≥ 95% (SDS-PAGE)
Purification:	Purified by immunogen affinity chromatography.
Storage:	Aliquot and store at -20°C. Avoid repeated freeze/thaw cycles.
Validity:	12 months.
UniProt Primary AC:	P16284 (UniProt , ExPASy)
Gene Symbol:	PECAM1
GeneID:	5175
OMIM:	173445
HGNC:	8823
KEGG:	hsa:5175
Ensembl:	ENSG00000261371
String:	9606.ENSP00000457421
Molecular Weight:	Observed MW: 130 kDa
Buffer:	PBS, pH 7.3, with 0.02% sodium azide and 50% glycerol.
Concentration:	2 mg/ml
Note:	THIS PRODUCT IS FOR RESEARCH USE ONLY. NOT FOR USE IN DIAGNOSTIC, THERAPEUTIC OR COSMETIC PROCEDURES. NOT FOR HUMAN OR ANIMAL CONSUMPTION.