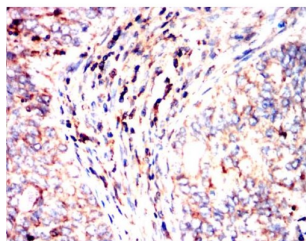
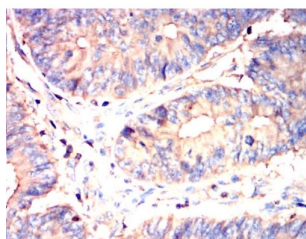


## **Phosphatidylinositol-4,5-Bisphosphate 3-Kinase Catalytic Subunit Alpha Isoform (PIK3CA) Antibody**

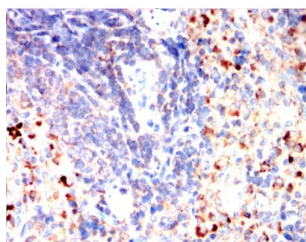
Catalogue No.: abx011338



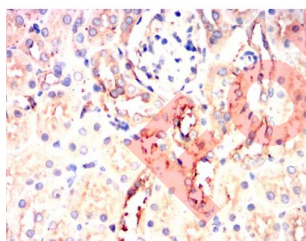
IHC-P analysis of human cervical cancer tissue, showing cytoplasmic localization, with DAB staining.



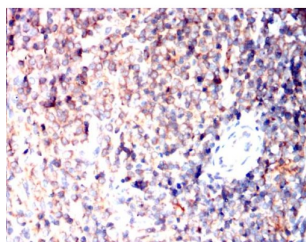
IHC-P analysis of human colon cancer tissue, showing cytoplasmic localization, with DAB staining.



IHC-P analysis of rat spleen tissue, showing cytoplasmic localization, with DAB staining.



IHC-P analysis of rat kidney tissue, showing cytoplasmic localization, with DAB staining.

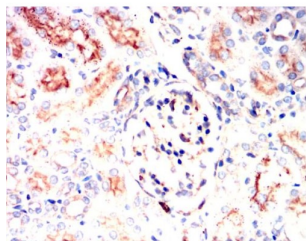


IHC-P analysis of rabbit spleen tissue, showing cytoplasmic localization, with DAB staining.

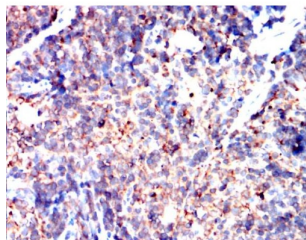
# Datasheet

Version: 3.0.0

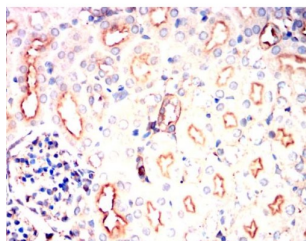
Revision date: 04 Jul 2025



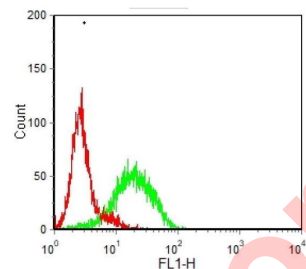
IHC-P analysis of rabbit kidney tissue, showing cytoplasmic localization, with DAB staining.



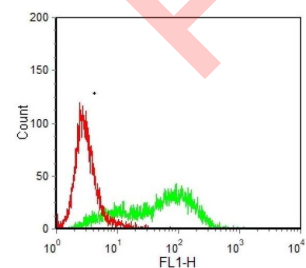
IHC-P analysis of mouse spleen tissue, showing cytoplasmic localization, with DAB staining.



IHC-P analysis of mouse kidney tissue, showing cytoplasmic localization, with DAB staining.



Flow cytometric analysis of HL-60 cells using PIK3CA antibody (green) and negative control (red).

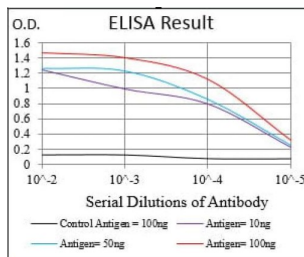


Flow cytometric analysis of HeLa cells using PIK3CA antibody (green) and negative control (red).

# Datasheet

Version: 3.0.0

Revision date: 04 Jul 2025



ELISA analysis. Black: Control Antigen (100 ng); Purple: Antigen (10 ng); Blue: Antigen (50 ng); Red: Antigen (100 ng).

Phosphatidylinositol 3-kinase is composed of an 85 kDa regulatory subunit and a 110 kDa catalytic subunit. The protein encoded by this gene represents the catalytic subunit, which uses ATP to phosphorylate PtdIns, PtdIns4P and PtdIns (4,5)P2. This gene has been found to be oncogenic and has been implicated in cervical cancers.

**Target:** Phosphatidylinositol-4,5-Bisphosphate 3-Kinase Catalytic Subunit Alpha Isoform (PIK3CA)

**Clonality:** Monoclonal

**Clone:** T221

**Reactivity:** Human

**Tested Applications:** ELISA, IHC, FCM

**Host:** Mouse

**Recommended dilutions:** ELISA: 1/10000, IHC: 1/200 - 1/1000, IF/ICC: 1/200 - 1/1000, FCM: 1/200 - 1/400. Optimal dilutions/concentrations should be determined by the end user.

**Conjugation:** Unconjugated

**Immunogen:** Purified recombinant fragment of human PIK3CA expressed in E. coli.

**Isotype:** IgG<sub>2a</sub>

**Form:** Liquid

**Purification:** Purified from ascites by Protein G chromatography.

**Storage:** Aliquot and store at -20°C. Avoid repeated freeze/thaw cycles.

**UniProt Primary AC:** P42336 ([UniProt](#), [ExPASy](#))

**Gene Symbol:** PIK3CA

# Datasheet

Version: 3.0.0  
Revision date: 04 Jul 2025



<b>GeneID:</b>	<a href="#">5290</a>
<b>OMIM:</b>	<a href="#">114480</a>
<b>HGNC:</b>	8975
<b>KEGG:</b>	hsa:5290
<b>Ensembl:</b>	ENSG00000121879
<b>String:</b>	<a href="#">9606.ENSP00000263967</a>
<b>Molecular Weight:</b>	124 kDa
<b>Buffer:</b>	PBS, containing 0.05% sodium azide.
<b>Specificity:</b>	Cross-reacts with Mouse, Rat and Rabbit PIK3CA in IHC-P.
<b>Concentration:</b>	1 mg/ml
<b>Note:</b>	THIS PRODUCT IS FOR RESEARCH USE ONLY. NOT FOR USE IN DIAGNOSTIC, THERAPEUTIC OR COSMETIC PROCEDURES. NOT FOR HUMAN OR ANIMAL CONSUMPTION.

For Reference Only