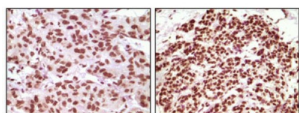


Progesterone Receptor (PR) Antibody

Catalogue No.: abx011372



Western blot analysis using PR antibody against PR recombinant protein (1).



Immunohistochemical analysis of paraffin-embedded human infiltrating ductal carcinoma tissue (left) and simple carcinoma of breast cancer tissue (right), showing nuclear localization using PR antibody with DAB staining.

PR (progesterone receptor), with 933-amino acid protein (about 110kDa), a member of the steroid receptor superfamily, mediates the physiologic effects of progesterone, PR is mediated by two functionally different isoforms of the progesterone receptor, the full length PR-B and the short form PR-A. The PR-A and PR-B proteins are 94 kDa and 114 kDa respectively. That are equimolar in the normal breast but dysregulated in advanced disease. PR is prognostic markers in breast cancers irrespective of the patient's progestational status Human progesterone.

Target: Progesterone Receptor (PR)

Clonality: Monoclonal

Reactivity: Human

Tested Applications: ELISA, IHC

Host: Mouse

Recommended dilutions: ELISA: 1/10000, IHC: 1/200 - 1/1000. Optimal dilutions/concentrations should be determined by the end user.

Conjugation: Unconjugated

Immunogen: Purified recombinant fragment of PR expressed in E. coli.

Isotype: IgG₁

Datasheet

Version: 5.0.0
Revision date: 13 Aug 2025



Form:	Liquid
Purification:	Unpurified ascites.
Storage:	Aliquot and store at -20°C. Avoid repeated freeze/thaw cycles.
UniProt Primary AC:	P06401 (UniProt , ExPASy)
Gene Symbol:	PGR
GeneID:	5241
OMIM:	607311
HGNC:	8910
KEGG:	hsa:5241
Ensembl:	ENSG00000082175
String:	9606.ENSP00000325120
Molecular Weight:	99 kDa
Buffer:	Ascitic fluid containing 0.03% sodium azide.
Concentration:	Not determined.
Note:	THIS PRODUCT IS FOR RESEARCH USE ONLY. NOT FOR USE IN DIAGNOSTIC, THERAPEUTIC OR COSMETIC PROCEDURES. NOT FOR HUMAN OR ANIMAL CONSUMPTION.