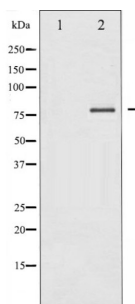


## Protein Kinase C Delta (PRKCD) Antibody

Catalogue No.: abx011387



Western blot analysis of PKC delta expression in MCF7 whole cell lysates. The lane on the left is treated with the antigen-specific peptide.

PKC delta Antibody detects endogenous levels of total PKC delta. Protein kinase C (PKC) is a family of serine- and threonine-specific protein kinases that can be activated by calcium and the second messenger diacylglycerol. PKC family members phosphorylate a wide variety of protein targets and are known to be involved in diverse cellular signaling pathways.

<b>Target:</b>	Protein Kinase C Delta (PRKCD)
<b>Clonality:</b>	Polyclonal
<b>Reactivity:</b>	Human
<b>Tested Applications:</b>	WB, IHC
<b>Host:</b>	Rabbit
<b>Recommended dilutions:</b>	WB: 1/500 - 1/2000. Optimal dilutions/concentrations should be determined by the end user.
<b>Conjugation:</b>	Unconjugated
<b>Immunogen:</b>	Synthesised peptide derived from human PKC delta
<b>Form:</b>	Liquid
<b>Purification:</b>	Purified by immunogen affinity chromatography.
<b>Storage:</b>	Aliquot and store at -20°C. Avoid repeated freeze/thaw cycles.
<b>UniProt Primary AC:</b>	Q05655 ( <a href="#">UniProt</a> , <a href="#">ExPASy</a> )
<b>Gene Symbol:</b>	PRKCD
<b>KEGG:</b>	hsa:5580

# Datasheet

Version: 2.0.0

Revision date: 20 Jun 2025



**Ensembl:** ENSG00000163932

**String:** [9606.ENSP00000378217](#)

**Enzyme Commission Number:** EC 2.7.11.13

**Molecular Weight:** 78 kDa

**Buffer:** PBS, pH 7.4, 150 mM NaCl, 0.02% sodium azide and 50% glycerol.

**Specificity:** PKC delta Antibody detects endogenous levels of total PKC delta

**Concentration:** 1 mg/ml

**Note:** THIS PRODUCT IS FOR RESEARCH USE ONLY. NOT FOR USE IN DIAGNOSTIC, THERAPEUTIC OR COSMETIC PROCEDURES. NOT FOR HUMAN OR ANIMAL CONSUMPTION.

For Reference Only