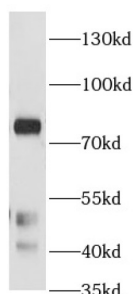
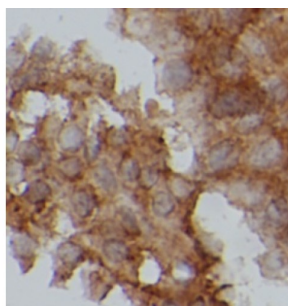


Protein Kinase C Alpha Type (PRKCA) Antibody

Catalogue No.: abx011394



WB analysis of Jurkat cells, using KPCA antibody (1/1000 dilution).



IHC-P analysis of rat testis tissue, using KPCA antibody (1/200 dilution).

Protein Kinase C Alpha Type (PRKCA) Antibody is a Rabbit Polyclonal antibody for the detection of KPCA.

Protein kinase C (PKC) is a family of serine- and threonine-specific protein kinases that can be activated by calcium and the second messenger diacylglycerol. PKC family members phosphorylate a wide variety of protein targets and are known to be involved in diverse cellular signaling pathways. PKC family members also serve as major receptors for phorbol esters, a class of tumor promoters. Each member of the PKC family has a specific expression profile and is believed to play a distinct role in cells. The protein encoded by this gene is one of the PKC family members. This kinase has been reported to play roles in many different cellular processes, such as cell adhesion, cell transformation, cell cycle checkpoint, and cell volume control. Knockout studies in mice suggest that this kinase may be a fundamental regulator of cardiac contractility and Ca (2+) handling in myocytes.

Target: Protein Kinase C Alpha Type (PRKCA)**Clonality:** Polyclonal**Reactivity:** Human, Mouse, Rat**Tested Applications:** ELISA, WB, IHC, IF/ICC**Host:** Rabbit**Recommended dilutions:** WB: 1/500 - 1/2000, IHC: 1/20 - 1/200, IF/ICC: 1/20 - 1/200. Optimal dilutions/concentrations should be determined by the end user.**Conjugation:** Unconjugated

Datasheet

Version: 3.0.0
Revision date: 02 Oct 2025



Immunogen:	protein kinase C, alpha
Isotype:	IgG
Form:	Liquid
Purity:	≥ 95% (SDS-PAGE)
Purification:	Purified by immunogen affinity chromatography.
Storage:	Aliquot and store at -20°C. Avoid repeated freeze/thaw cycles.
Validity:	12 months.
UniProt Primary AC:	P17252 (UniProt , ExPASy)
Gene Symbol:	PRKCA
GeneID:	5578
OMIM:	176960
HGNC:	9393
KEGG:	hsa:5578
Ensembl:	ENSG00000154229
String:	9606.ENSP00000408695
Molecular Weight:	Observed MW: 77 kDa
Buffer:	PBS, pH 7.3, with 0.02% sodium azide and 50% glycerol.
Concentration:	2 mg/ml
Note:	THIS PRODUCT IS FOR RESEARCH USE ONLY. NOT FOR USE IN DIAGNOSTIC, THERAPEUTIC OR COSMETIC PROCEDURES. NOT FOR HUMAN OR ANIMAL CONSUMPTION.