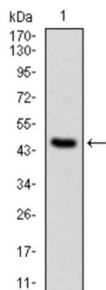
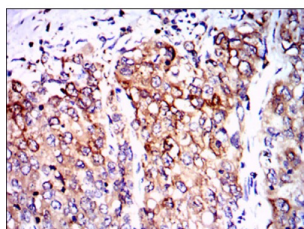


Protein Phosphatase 2A Activator, Regulatory Subunit 4 (PPP2R4) Antibody

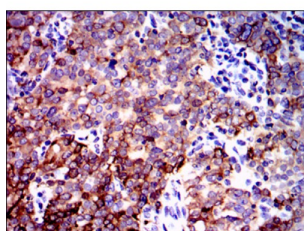
Catalogue No.: abx011399



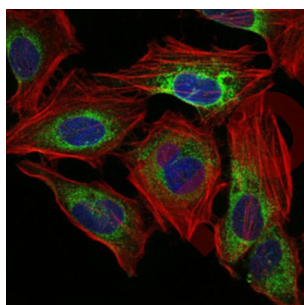
Western blot analysis using PPP2R4 antibody against human PPP2R4 (AA: 1-154) recombinant protein. (Expected MW is 41 kDa).



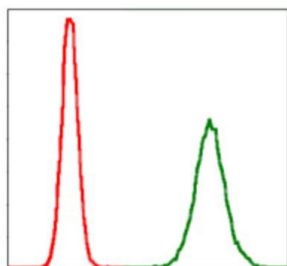
Immunohistochemical analysis of paraffin-embedded cervical cancer tissues using PPP2R4 antibody with DAB staining.



Immunohistochemical analysis of paraffin-embedded lung cancer tissues using PPP2R4 antibody with DAB staining.



Immunofluorescence analysis of HeLa cells using PPP2R4 antibody (green). Blue: DRAQ5 fluorescent DNA dye. Red: Actin filaments have been labeled with AF555 phalloidin.

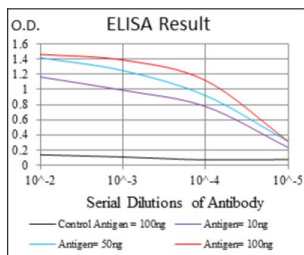


Flow cytometric analysis of MCF-7 cells using PPP2R4 antibody (green) and negative control (red).

Datasheet

Version: 6.0.0

Revision date: 05 Mar 2025



Red: Control Antigen (100ng) ; Purple: Antigen (10ng) ; Green: Antigen (50ng) ; Blue: Antigen (100ng).

Protein phosphatase 2A is one of the four major Ser/Thr phosphatases and is implicated in the negative control of cell growth and division. Protein phosphatase 2A holoenzymes are heterotrimeric proteins composed of a structural subunit A, a catalytic subunit C, and a regulatory subunit B. The regulatory subunit is encoded by a diverse set of genes that have been grouped into the B/PR55, B'/PR61, and B''/PR72 families. These different regulatory subunits confer distinct enzymatic specificities and intracellular localizations to the holoenzyme. The product of this gene belongs to the B' family. This gene encodes a specific phosphotyrosyl phosphatase activator of the dimeric form of protein phosphatase 2A. Alternative splicing results in multiple transcript variants encoding different isoforms.

Target: Protein Phosphatase 2A Activator, Regulatory Subunit 4 (PPP2R4)

Clonality: Monoclonal

Reactivity: Human

Tested Applications: ELISA, IHC, IF/ICC, FCM

Host: Mouse

Recommended dilutions: ELISA: 1/10000, IHC: 1/200 - 1/1000, IF/ICC: 1/200 - 1/1000, FCM: 1/200 - 1/400. Optimal dilutions/concentrations should be determined by the end user.

Conjugation: Unconjugated

Immunogen: Purified recombinant fragment of human PPP2R4 expressed in E. coli.

Isotype: IgG₁

Form: Liquid

Purification: Purified from ascites by Protein G chromatography.

Storage: Aliquot and store at -20°C. Avoid repeated freeze/thaw cycles.

UniProt Primary AC: Q15257 ([UniProt](#), [ExPASy](#))

Gene Symbol: PTPA

Datasheet

Version: 6.0.0
Revision date: 05 Mar 2025



GeneID: [5524](#)

OMIM: [600756](#)

HGNC: 9308

KEGG: hsa:5524

Ensembl: ENSG00000119383

String: [9606.ENSP00000377036](#)

Molecular Weight: 41 kDa

Buffer: PBS, containing 0.05% sodium azide.

Concentration: 1 mg/ml

Note: THIS PRODUCT IS FOR RESEARCH USE ONLY. NOT FOR USE IN DIAGNOSTIC, THERAPEUTIC OR COSMETIC PROCEDURES. NOT FOR HUMAN OR ANIMAL CONSUMPTION.

For Reference Only