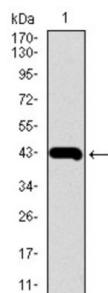
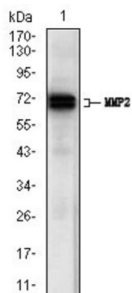


Matrix Metalloproteinase 2 (MMP2) Antibody

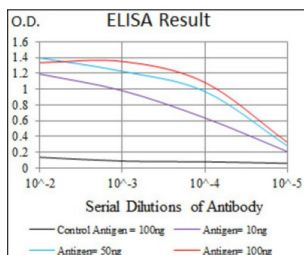
Catalogue No.: abx011405



Western blot analysis using MMP2 antibody against human MMP2 recombinant protein. (Expected MW is 42.8 kDa).



Western blot analysis using MMP2 antibody against A431 (1) cell lysate.



Red: Control Antigen (100ng) ; Purple: Antigen (10ng) ; Green: Antigen (50ng) ; Blue: Antigen (100ng).

Proteins of the matrix metalloproteinase (MMP) family are involved in the breakdown of extracellular matrix in normal physiological processes, such as embryonic development, reproduction, and tissue remodeling, as well as in disease processes, such as arthritis and metastasis. Most MMP's are secreted as inactive proproteins which are activated when cleaved by extracellular proteinases. This gene encodes an enzyme which degrades type IV collagen, the major structural component of basement membranes.

Target: Matrix Metalloproteinase 2 (MMP2)

Clonality: Monoclonal

Reactivity: Human

Tested Applications: ELISA, WB

Host: Mouse

Datasheet

Version: 3.0.0
Revision date: 26 Jun 2025



Recommended dilutions: ELISA: 1/10000, WB: 1/500 - 1/2000. Optimal dilutions/concentrations should be determined by the end user.

Conjugation: Unconjugated

Immunogen: Purified recombinant fragment of human MMP2 (AA: 242-396) expressed in E. coli.

Isotype: IgG₁

Form: Liquid

Purification: Purified from ascites by Protein G chromatography.

Storage: Aliquot and store at -20°C. Avoid repeated freeze/thaw cycles.

UniProt Primary AC: P08253 ([UniProt](#), [ExPASy](#))

Gene Symbol: MMP2

GeneID: [4313](#)

OMIM: [120360](#)

HGNC: 7166

KEGG: hsa:4313

Ensembl: ENSG00000087245

String: [9606.ENSP00000219070](#)

Molecular Weight: 73.8 kDa

Buffer: PBS, containing 0.05% sodium azide.

Concentration: 1 mg/ml

Note: THIS PRODUCT IS FOR RESEARCH USE ONLY. NOT FOR USE IN DIAGNOSTIC, THERAPEUTIC OR COSMETIC PROCEDURES. NOT FOR HUMAN OR ANIMAL CONSUMPTION.