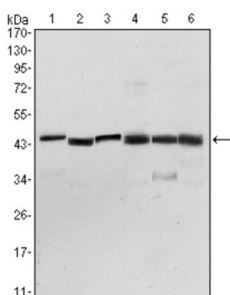
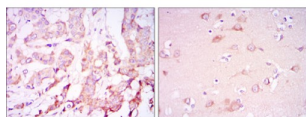


Pyruvate Dehydrogenase Kinase Isozyme 1 (PDK1) Antibody

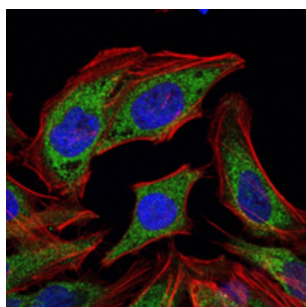
Catalogue No.: abx011428



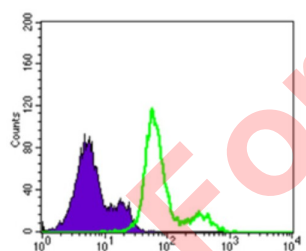
Western blot analysis using PDK1 antibody against NIH/3T3 (1), HeLa (2), Jurkat (3), HepG2 (4), PC-12 (5), and Cos7 (6) cell lysate.



Immunohistochemical analysis of paraffin-embedded breast cancer tissues (left) and brain tissues (right) using PDK1 antibody with DAB staining.



Immunofluorescence analysis of HELA cells using PDK1 antibody (green). Blue: DRAQ5 fluorescent DNA dye. Red: Actin filaments have been labeled with AF555 phalloidin.



Flow cytometric analysis of Lovo cells using PDK1 antibody (green) and negative control (purple).

Pyruvate dehydrogenase (PDH) is a mitochondrial multienzyme complex that catalyzes the oxidative decarboxylation of pyruvate and is one of the major enzymes responsible for the regulation of homeostasis of carbohydrate fuels in mammals. The enzymatic activity is regulated by a phosphorylation/dephosphorylation cycle. Phosphorylation of PDH by a specific pyruvate dehydrogenase kinase (PDK) results in inactivation. (provided by RefSeq). Tissue specificity: Expressed predominantly in the heart.

Target:

Pyruvate Dehydrogenase Kinase Isozyme 1 (PDK1)

Datasheet

Version: 3.0.0
Revision date: 15 Aug 2025



Clonality:	Monoclonal
Reactivity:	Human, Monkey, Rat
Tested Applications:	ELISA, WB, IHC, IF/ICC, FCM
Host:	Mouse
Recommended dilutions:	ELISA: 1/10000, WB: 1/500 - 1/2000, IHC: 1/200 - 1/1000, IF/ICC: 1/200 - 1/1000, FCM: 1/200 - 1/400. Optimal dilutions/concentrations should be determined by the end user.
Conjugation:	Unconjugated
Immunogen:	Purified recombinant fragment of human PDK1 expressed in E. coli.
Isotype:	IgG ₁
Form:	Liquid
Purification:	Unpurified ascites.
Storage:	Aliquot and store at -20°C. Avoid repeated freeze/thaw cycles.
UniProt Primary AC:	Q15118 (UniProt , ExPASy)
GeneID:	5163
KEGG:	hsa:5163
String:	9606.ENSP00000376352
Molecular Weight:	44 kDa
Buffer:	Ascitic fluid containing 0.03% sodium azide.
Concentration:	Not determined.
Note:	THIS PRODUCT IS FOR RESEARCH USE ONLY. NOT FOR USE IN DIAGNOSTIC, THERAPEUTIC OR COSMETIC PROCEDURES. NOT FOR HUMAN OR ANIMAL CONSUMPTION.