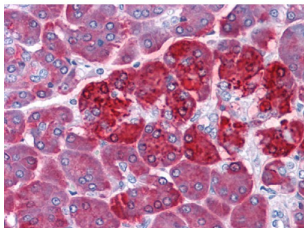
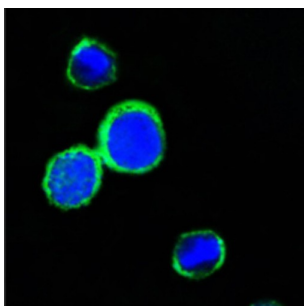


Lithostathine-1-Alpha (REG1A) Antibody

Catalogue No.: abx011453



Immunohistochemical analysis of paraffin-embedded human Pancreas tissues using REG1A antibody.



Confocal immunofluorescence analysis of PC12 cells using REG1A antibody (green). Blue: DRAQ5 fluorescent DNA dye.

REG1A (regenerating islet-derived 1 alpha), also known as PTP, PSP, is a member of the Reg family of secreted proteins with a C-type lectin domain. REG1A is associated with islet cell regeneration and diabetogenesis and may be involved in pancreatic lithogenesis. Due to variable glycosylation, pancreatic REG1A exists as multiple species of 16 - 18 kDa. REG1A promotes the maintenance and growth of pancreatic islet beta cells and intestinal villi. It is upregulated in pancreatitis and some carcinomas. REG1A is an antigenic target in autoimmune diabetes.

Target: Lithostathine-1-Alpha (REG1A)

Clonality: Monoclonal

Reactivity: Human

Tested Applications: ELISA, IHC, IF/ICC

Host: Mouse

Recommended dilutions: ELISA: 1/10000, IHC: 1/200 - 1/1000, IF/ICC: 1/200 - 1/1000. Optimal dilutions/concentrations should be determined by the end user.

Conjugation: Unconjugated

Immunogen: Purified recombinant fragment of human REG1A fused with hIgGfc tag expressed in HEK293 cell line.

Isotype: IgG₁

Datasheet

Version: 5.0.0

Revision date: 02 May 2025



Form:	Liquid
Purification:	Unpurified ascites.
Storage:	Aliquot and store at -20°C. Avoid repeated freeze/thaw cycles.
UniProt Primary AC:	P05451 (UniProt , ExPASy)
Gene Symbol:	REG1A
GeneID:	5967
OMIM:	167770
HGNC:	9951
KEGG:	hsa:5967
Ensembl:	ENSG00000115386
String:	9606.ENSP00000233735
Molecular Weight:	19 kDa
Buffer:	Ascitic fluid containing 0.03% sodium azide.
Concentration:	Not determined.
Note:	THIS PRODUCT IS FOR RESEARCH USE ONLY. NOT FOR USE IN DIAGNOSTIC, THERAPEUTIC OR COSMETIC PROCEDURES. NOT FOR HUMAN OR ANIMAL CONSUMPTION.