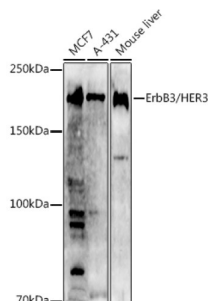
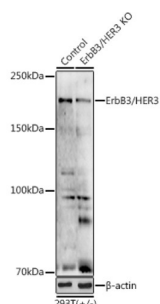


# V-Erb B2 Erythroblastic Leukemia Viral Oncogene Homolog 3 (ERBB3) Antibody

Catalogue No.: abx000910



Western blot analysis of various lysates using [KO Validated] ErbB3/HER3 Antibody at 1/1000 dilution. Secondary antibody: HRP-conjugated Goat anti-Rabbit IgG (H+L) at 1/10000 dilution. Lysates/proteins: 25 µg per lane. Blocking buffer: 3% nonfat dry milk in TBST. Exposure time: 180s.



Western blot analysis of lysates from wild type (WT) and ErbB3/HER3 knockout (KO) 293T cells, using [KO Validated] ErbB3/HER3 Antibody at 1/1000 dilution. Secondary antibody: HRP-conjugated Goat anti-Rabbit IgG (H+L) at 1/10000 dilution. Lysates/proteins: 25 µg per lane. Blocking buffer: 3% nonfat dry milk in TBST. Exposure time: 180s.

ERBB3 Antibody is a Rabbit Polyclonal antibody against ERBB3. This gene encodes a member of the epidermal growth factor receptor (EGFR) family of receptor tyrosine kinases. This membrane-bound protein has a neuregulin binding domain but not an active kinase domain. It therefore can bind this ligand but not convey the signal into the cell through protein phosphorylation. However, it does form heterodimers with other EGF receptor family members which do have kinase activity. Heterodimerization leads to the activation of pathways which lead to cell proliferation or differentiation. Amplification of this gene and/or overexpression of its protein have been reported in numerous cancers, including prostate, bladder, and breast tumors. Alternate transcriptional splice variants encoding different isoforms have been characterized. One isoform lacks the intermembrane region and is secreted outside the cell. This form acts to modulate the activity of the membrane-bound form. Additional splice variants have also been reported, but they have not been thoroughly characterized.

**Target:** V-Erb B2 Erythroblastic Leukemia Viral Oncogene Homolog 3 (ERBB3)

**Clonality:** Polyclonal

**Reactivity:** Human, Mouse

**Tested Applications:** ELISA, WB, IF/ICC

**Host:** Rabbit

**Recommended dilutions:** ELISA: 1 µg/ml, WB: 1/500 - 1/1000, IF/ICC: 1/50 - 1/200. Optimal dilutions/concentrations should be determined by the end user.

**Conjugation:** Unconjugated

# Datasheet

Version: 5.0.0  
Revision date: 07 Sep 2025



|                            |  |
|----------------------------|--|
| <b>Immunogen:</b>          | Recombinant protein corresponding to ERBB3. The exact sequence is proprietary.   |
| <b>Isotype:</b>            | IgG  |
| <b>Form:</b>               | Liquid   |
| <b>Purification:</b>       | Purified by affinity chromatography.   |
| <b>Storage:</b>            | Aliquot and store at -20°C. Avoid repeated freeze/thaw cycles.   |
| <b>UniProt Primary AC:</b> | P21860 ( <a href="#">UniProt</a> , <a href="#">ExPASy</a> )  |
| <b>Gene Symbol:</b>        | ERBB3  |
| <b>GeneID:</b>             | <a href="#">2065</a>   |
| <b>NCBI Accession:</b>     | NP_001973.2  |
| <b>KEGG:</b>               | hsa:2065   |
| <b>String:</b>             | <a href="#">9606.ENSP00000267101</a>   |
| <b>Molecular Weight:</b>   | Calculated MW: 148 kDa<br>Observed MW: 185 kDa   |
| <b>Buffer:</b>             | PBS, pH 7.3, containing 0.05% Proclin-300, 50% glycerol.   |
| <b>Concentration:</b>      | > 0.2 mg/ml  |
| <b>Note:</b>               | THIS PRODUCT IS FOR RESEARCH USE ONLY. NOT FOR USE IN DIAGNOSTIC, THERAPEUTIC OR COSMETIC PROCEDURES. NOT FOR HUMAN OR ANIMAL CONSUMPTION. |