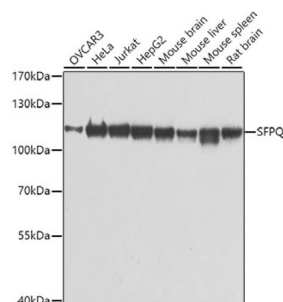
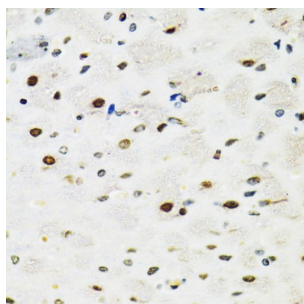


## Splicing Factor Proline And Glutamine Rich (SFPQ) Antibody

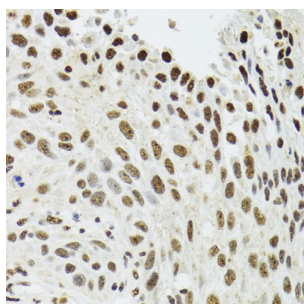
Catalogue No.: abx000914



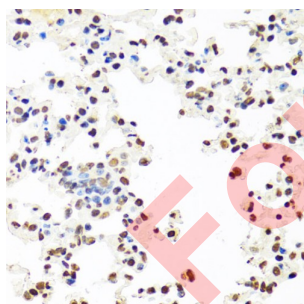
Western blot analysis of extracts of various cell lines using SFPQ Antibody (1/1000 dilution).



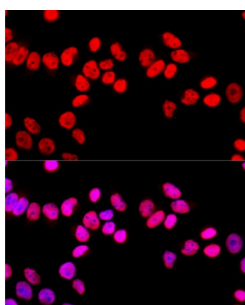
Immunohistochemistry of paraffin-embedded Rat brain using SFPQ Antibody (1/100 dilution, 40x lens).



Immunohistochemistry of paraffin-embedded Human lung cancer using SFPQ Antibody (1/100 dilution, 40x lens).



Immunohistochemistry of paraffin-embedded Mouse lung using SFPQ Antibody (1/100 dilution, 40x lens).



Immunofluorescence analysis of HeLa cells using SFPQ Antibody (1/100 dilution, 40x lens). Blue: DAPI for nuclear staining.

# Datasheet

Version: 4.0.0  
Revision date: 05 Mar 2025



SFPQ Antibody is a Rabbit Polyclonal antibody against SFPQ. SFPQ, also named PSF, encodes a nuclear factor implicated in the splicing and regulation of gene expression. SFPQ probably forms a heteromer with NONO and participates in DNA pairing and DNA break repair program. Very recently SFPQ was identified as a downstream target of tau, complete nuclear depletion and cytoplasmic accumulation of SFPQ were shown in the neurons and astrocytes of brains with Alzheimer's disease (AD), more strikingly, reduced SFPQ levels may progress together with tau pathology, these observation strongly suggests the important role of SFPQ pathology in neurodegenerative diseases including AD. SFPQ protein may appears as 47 kDa, 52 kDa or 100 kDa molecules in various cell types. Catalog# 15585-1-AP is a rabbit polyclonal antibody raised against the N-terminal of human SFPQ.

<b>Target:</b>	Splicing Factor Proline And Glutamine Rich (SFPQ)
<b>Clonality:</b>	Polyclonal
<b>Reactivity:</b>	Human, Mouse, Rat
<b>Tested Applications:</b>	WB, IHC, IF/ICC
<b>Host:</b>	Rabbit
<b>Recommended dilutions:</b>	WB: 1/500 - 1/1000, IHC-P: 1/50 - 1/100, IF/ICC: 1/50 - 1/100. Not tested in IHC-F. Optimal dilutions/concentrations should be determined by the end user.
<b>Conjugation:</b>	Unconjugated
<b>Immunogen:</b>	Recombinant fusion protein corresponding to human SFPQ
<b>Isotype:</b>	IgG
<b>Form:</b>	Liquid
<b>Purification:</b>	Purified by affinity chromatography.
<b>Storage:</b>	Aliquot and store at -20°C. Avoid repeated freeze/thaw cycles.
<b>UniProt Primary AC:</b>	P23246 ( <a href="#">UniProt</a> , <a href="#">ExPASy</a> )
<b>Gene Symbol:</b>	SFPQ
<b>GeneID:</b>	<a href="#">6421</a>
<b>NCBI Accession:</b>	NP_005057.1
<b>KEGG:</b>	hsa:6421
<b>String:</b>	<a href="#">9606.ENSP00000349748</a>

# Datasheet

Version: 4.0.0

Revision date: 05 Mar 2025



**Molecular Weight:** Calculated MW: 72 kDa/76 kDa  
Observed MW: 115 kDa

**Buffer:** PBS, pH 7.3, containing 0.02% sodium azide, 50% glycerol.

**Concentration:** 1 mg/ml

**Note:** THIS PRODUCT IS FOR RESEARCH USE ONLY. NOT FOR USE IN DIAGNOSTIC, THERAPEUTIC OR COSMETIC PROCEDURES. NOT FOR HUMAN OR ANIMAL CONSUMPTION.

For Reference Only