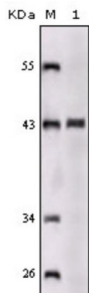
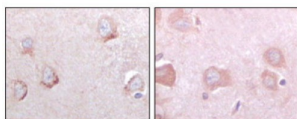


## Sorlin Related Receptor (SORL1) Antibody

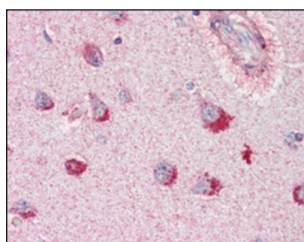
Catalogue No.: abx011546



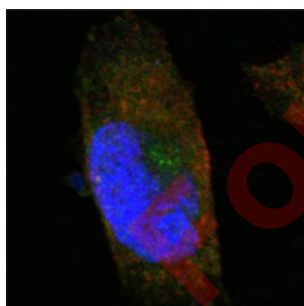
Western blot analysis using SORL1 antibody against truncated SORL1 recombinant protein.



Immunohistochemical analysis of paraffin-embedded human cerebrum tissues using SORL1 antibody with DAB staining.



Immunohistochemical analysis of paraffin-embedded human brain, cortex tissues using SORL1 antibody.



Confocal immunofluorescence analysis of PANC-1 cells using SORL1 antibody (green). Red: Actin filaments have been labeled with AF555 phalloidin. Blue: DRAQ5 fluorescent DNA dye.

SORL1 (sortilin-related receptor, L A repeats containing) also known as sorting protein-related receptor containing LDLR class A (SorLA), is a Type I membrane protein that may be involved in cell-cell interaction. SorLA, a single transmembrane receptor, binds LDL and transports it into cells by endocytosis. SorLA is synthesized as a proreceptor which is processed to the mature form by a furin-like propeptidase. It can also bind to RAP (receptor-associated protein). SorLA is a multifunctional endocytosis receptor important in lipoprotein and protease uptake. The N-terminal propeptide, which is removed, can be cleaved by furin or homologous proteases. Endogenous SorLA binds the neuropeptide head activator (HA) and is important for HA signaling and function. The gene encoding for the protein maps to chromosome 8p23.1. SorLA is expressed mainly in brain (cerebral cortex, cerebellum and the occipital pole), but can also be found in liver, spinal cord, kidney, testis and pancreas.

# Datasheet

Version: 3.0.0  
Revision date: 05 Mar 2025



<b>Target:</b>	Sortilin Related Receptor (SORL1)
<b>Clonality:</b>	Monoclonal
<b>Reactivity:</b>	Human
<b>Tested Applications:</b>	ELISA, IHC, IF/ICC
<b>Host:</b>	Mouse
<b>Recommended dilutions:</b>	ELISA: 1/10000, IHC: 1/200 - 1/1000, IF/ICC: 1/200 - 1/1000. Optimal dilutions/concentrations should be determined by the end user.
<b>Conjugation:</b>	Unconjugated
<b>Immunogen:</b>	Purified recombinant fragment of human SORL1 expressed in E. coli.
<b>Isotype:</b>	IgG <sub>1</sub>
<b>Form:</b>	Liquid
<b>Purification:</b>	Unpurified ascites.
<b>Storage:</b>	Aliquot and store at -20°C. Avoid repeated freeze/thaw cycles.
<b>UniProt Primary AC:</b>	Q92673 ( <a href="#">UniProt</a> , <a href="#">ExPASy</a> )
<b>Gene Symbol:</b>	SORL1
<b>GeneID:</b>	<a href="#">6653</a>
<b>OMIM:</b>	<a href="#">104300</a>
<b>HGNC:</b>	11185
<b>KEGG:</b>	hsa:6653
<b>Ensembl:</b>	ENSG00000137642
<b>String:</b>	<a href="#">9606.ENSP00000260197</a>
<b>Molecular Weight:</b>	246 kDa
<b>Buffer:</b>	Ascitic fluid containing 0.03% sodium azide.

# Datasheet

Version: 3.0.0

Revision date: 05 Mar 2025



**Concentration:** Not determined.

**Note:** THIS PRODUCT IS FOR RESEARCH USE ONLY. NOT FOR USE IN DIAGNOSTIC, THERAPEUTIC OR COSMETIC PROCEDURES. NOT FOR HUMAN OR ANIMAL CONSUMPTION.

For Reference Only