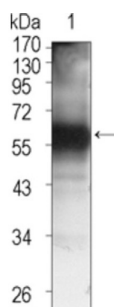


Tyrosine-Protein Kinase Tec (TEC) Antibody

Catalogue No.: abx011600



Western blot analysis using TEC antibody against TEC (aa90-240) -hlgGFc transfected HEK293 cell lysate (1).

TEC, it belongs to the Tec family of non-receptor protein-tyrosine kinases containing a pleckstrin homology domain. Tec family kinases are involved in the intracellular signaling mechanisms of cytokine receptors, lymphocyte surface antigens, heterotrimeric G-protein coupled receptors, and integrin molecules. They are also key players in the regulation of the immune functions. Tec kinase is an integral component of T cell signaling and has a distinct role in T cell activation. This gene may be associated with myelodysplastic syndrome.

Target:	Tyrosine-Protein Kinase Tec (TEC)
Clonality:	Monoclonal
Reactivity:	Human
Tested Applications:	ELISA
Host:	Mouse
Recommended dilutions:	ELISA: 1/10000. Optimal dilutions/concentrations should be determined by the end user.
Conjugation:	Unconjugated
Immunogen:	Purified recombinant fragment of TEC expressed in E. coli.
Isotype:	IgG ₁
Form:	Liquid
Purification:	Unpurified ascites.
Storage:	Aliquot and store at -20°C. Avoid repeated freeze/thaw cycles.
UniProt Primary AC:	P42680 (UniProt , ExPASy)

Datasheet

Version: 2.0.0

Revision date: 30 Aug 2025



Gene Symbol:	TEC
GeneID:	7006
OMIM:	600583
HGNC:	11719
KEGG:	hsa:7006
Ensembl:	ENSG00000135605
String:	9606.ENSP00000370912
Molecular Weight:	74 kDa
Buffer:	Ascitic fluid containing 0.03% sodium azide.
Concentration:	Not determined.
Note:	THIS PRODUCT IS FOR RESEARCH USE ONLY. NOT FOR USE IN DIAGNOSTIC, THERAPEUTIC OR COSMETIC PROCEDURES. NOT FOR HUMAN OR ANIMAL CONSUMPTION.