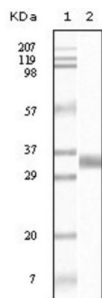


## Transforming Growth Factor Beta-1 (TGFB1) Antibody

Catalogue No.: abx011604



Western blot analysis using TGF beta1 antibody against truncated TGF beta1 recombinant protein.

TGF beta (transforming growth factor beta), with 390-amino acid protein (about 43 kDa), is a multifunctional peptide that controls proliferation, differentiation, and other functions in many cell types. In mammals, three isoforms of TGF beta, that is, beta 1, beta 2, and beta 3, are known. TGF beta is one of numerous inhibitory factors produced by cancer cells that regulate antitumor immunity. TGF beta 1 takes part in the local response in the course of primary lung cancer and TGF beta 1 is thought to be implicated in breast cancer progression. TGF beta 1 also plays a critical role in the downregulation of microglial responses minimizing brain inflammation and thus avoiding exacerbation of brain damage.

<b>Target:</b>	Transforming Growth Factor Beta-1 (TGFB1)
<b>Clonality:</b>	Monoclonal
<b>Reactivity:</b>	Human
<b>Tested Applications:</b>	ELISA
<b>Host:</b>	Mouse
<b>Recommended dilutions:</b>	ELISA: 1/10000. Optimal dilutions/concentrations should be determined by the end user.
<b>Conjugation:</b>	Unconjugated
<b>Immunogen:</b>	Purified recombinant fragment of TGF beta1 expressed in E. coli.
<b>Isotype:</b>	IgG <sub>2a</sub>
<b>Form:</b>	Liquid
<b>Purification:</b>	Unpurified ascites.
<b>Storage:</b>	Aliquot and store at -20°C. Avoid repeated freeze/thaw cycles.
<b>UniProt Primary AC:</b>	P01137 ( <a href="#">UniProt</a> , <a href="#">ExPASy</a> )

# Datasheet

Version: 4.0.0

Revision date: 11 Sep 2025



**Gene Symbol:** TGFB1

**GeneID:** [7040](#)

**OMIM:** [131300](#)

**HGNC:** 11766

**KEGG:** hsa:7040

**Ensembl:** ENSG00000105329

**String:** [9606.ENSP00000221930](#)

**Molecular Weight:** 45 kDa

**Buffer:** Ascitic fluid containing 0.03% sodium azide.

**Concentration:** Not determined.

**Note:** THIS PRODUCT IS FOR RESEARCH USE ONLY. NOT FOR USE IN DIAGNOSTIC, THERAPEUTIC OR COSMETIC PROCEDURES. NOT FOR HUMAN OR ANIMAL CONSUMPTION.