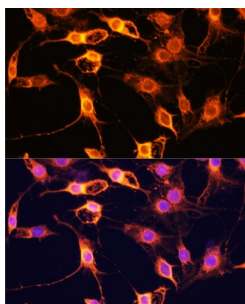
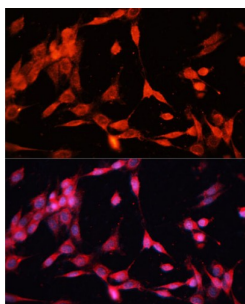


TNF Receptor-Associated Factor 6 (TRAF6) Antibody

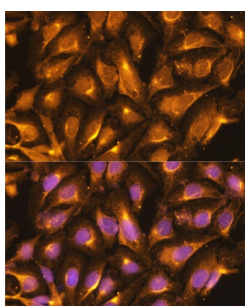
Catalogue No.: abx000926



Immunofluorescence analysis of C6 cells using TRAF6 Antibody (1/100 dilution, 40x lens).
Blue: DAPI for nuclear staining.



Immunofluorescence analysis of NIH-3T3 cells using TRAF6 Antibody (1/100 dilution, 40x lens).
Blue: DAPI for nuclear staining.



Immunofluorescence analysis of U-2 OS cells using TRAF6 Antibody (1/100 dilution, 40x lens).
Blue: DAPI for nuclear staining.

TRAF6 Antibody is a Rabbit Polyclonal antibody against TRAF6. The protein encoded by this gene is a member of the TNF receptor associated factor (TRAF) protein family. TRAF proteins are associated with, and mediate signal transduction from, members of the TNF receptor superfamily. This protein mediates signaling from members of the TNF receptor superfamily as well as the Toll/IL-1 family. Signals from receptors such as CD40, TNFSF11/RANCE and IL-1 have been shown to be mediated by this protein. This protein also interacts with various protein kinases including IRAK1/IRAK, SRC and PKCzeta, which provides a link between distinct signaling pathways. This protein functions as a signal transducer in the NF-kappaB pathway that activates IkappaB kinase (IKK) in response to proinflammatory cytokines. The interaction of this protein with UBE2N/UBC13, and UBE2V1/UEV1A, which are ubiquitin conjugating enzymes catalyzing the formation of polyubiquitin chains, has been found to be required for IKK activation by this protein. This protein also interacts with the transforming growth factor (TGF) beta receptor complex and is required for Smad-independent activation of the JNK and p38 kinases. This protein has an amino terminal RING domain which is followed by four zinc-finger motifs, a central coiled-coil region and a highly conserved carboxyl terminal domain, known as the TRAF-C domain. Two alternatively spliced transcript variants, encoding an identical protein, have been reported.

Target: TNF Receptor-Associated Factor 6 (TRAF6)

Clonality: Polyclonal

Datasheet

Version: 5.0.0
Revision date: 06 Mar 2025



Reactivity: Human, Mouse, Rat

Tested Applications: IF/ICC

Host: Rabbit

Recommended dilutions: IF/ICC: 1/50 - 1/200. Optimal dilutions/concentrations should be determined by the end user.

Conjugation: Unconjugated

Immunogen: A synthetic peptide corresponding to human TRAF6.

Isotype: IgG

Form: Liquid

Purification: Purified by affinity chromatography.

Storage: Aliquot and store at -20°C. Avoid repeated freeze/thaw cycles.

UniProt Primary AC: Q9Y4K3 ([UniProt](#), [ExPASy](#))

Gene Symbol: TRAF6

GeneID: [7189](#)

NCBI Accession: NP_004611.1

String: [9606.ENSP00000433623](#)

Buffer: PBS, pH 7.3, containing 0.02% sodium azide, 50% glycerol.

Concentration: 1 mg/ml

Note: THIS PRODUCT IS FOR RESEARCH USE ONLY. NOT FOR USE IN DIAGNOSTIC, THERAPEUTIC OR COSMETIC PROCEDURES. NOT FOR HUMAN OR ANIMAL CONSUMPTION.