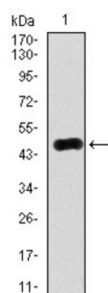
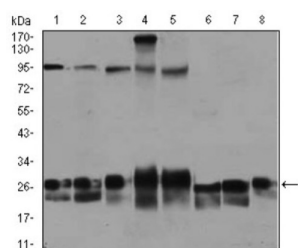


Ras-Related Protein Rab-4A (RAB4A) Antibody

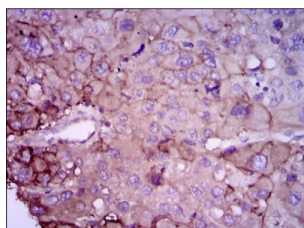
Catalogue No.: abx011709



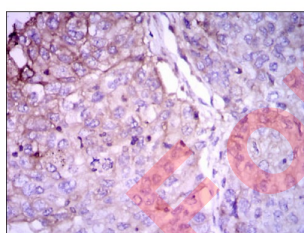
Western blot analysis using RAB4A antibody against human RAB4A (AA: 22-218) recombinant protein. (Expected MW is 47.9 kDa).



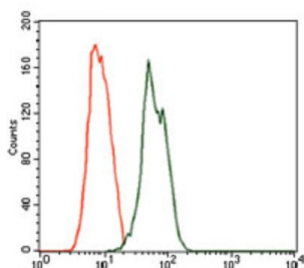
Western blot analysis using RAB4A antibody against Jurkat (1), HeLa (2), A549 (3), HEK293 (4), K562 (5), NIH3T3 (6), PC-12 (7), and COS7 (8) cell lysate.



Immunohistochemical analysis of paraffin-embedded lung cancer tissues using RAB4A antibody with DAB staining.



Immunohistochemical analysis of paraffin-embedded liver cancer tissues using RAB4A antibody with DAB staining.

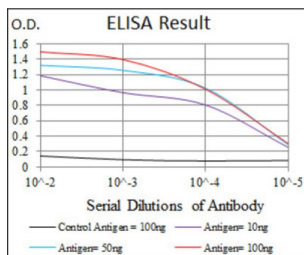


Flow cytometric analysis of MCF-7 cells using RAB4A antibody (green) and negative control (red).

Datasheet

Version: 4.0.0

Revision date: 17 Aug 2025



Red: Control Antigen (100ng) ; Purple: Antigen (10ng) ; Green: Antigen (50ng) ; Blue: Antigen (100ng).

The protein encoded by this gene belongs to the rab family. Rab4A protein is involved in the regulation of procathepsin L secretion, it was either inhibited by expression of a Rab4A dominant-negative mutant or increased by overexpression of the wild-type Rab4A in human melanoma cells.

Target: Ras-Related Protein Rab-4A (RAB4A)

Clonality: Monoclonal

Reactivity: Human, Mouse, Monkey

Tested Applications: ELISA, WB, IHC, FCM

Host: Mouse

Recommended dilutions: ELISA: 1/10000, WB: 1/500 - 1/2000, IHC: 1/200 - 1/1000, FCM: 1/200 - 1/400. Optimal dilutions/concentrations should be determined by the end user.

Conjugation: Unconjugated

Immunogen: Purified recombinant fragment of human RAB4A expressed in E. coli.

Isotype: IgG₁

Form: Liquid

Purification: Purified from ascites by Protein G chromatography.

Storage: Aliquot and store at -20°C. Avoid repeated freeze/thaw cycles.

UniProt Primary AC: P20338 ([UniProt](#), [ExPASy](#))

Gene Symbol: RAB4A

GeneID: [5867](#)

Datasheet

Version: 4.0.0

Revision date: 17 Aug 2025



KEGG: hsa:5867

String: [9606.ENSP00000355651](#)

Molecular Weight: 23.8 kDa

Buffer: PBS, containing 0.05% sodium azide.

Concentration: 1 mg/ml

Note: THIS PRODUCT IS FOR RESEARCH USE ONLY. NOT FOR USE IN DIAGNOSTIC, THERAPEUTIC OR COSMETIC PROCEDURES. NOT FOR HUMAN OR ANIMAL CONSUMPTION.

For Reference Only