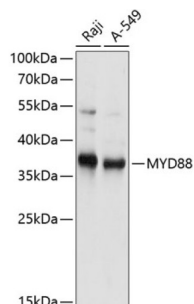
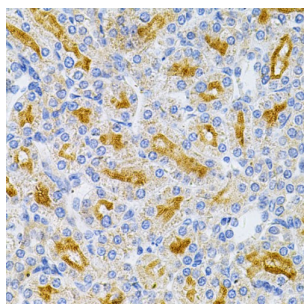


Myeloid Differentiation Primary Response Protein MyD88 (MYD88) Antibody

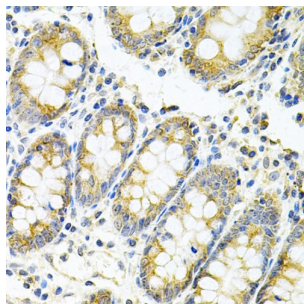
Catalogue No.: abx000933



Western blot analysis of extracts of various cell lines using MYD88 Antibody (1/1000 dilution).



Immunohistochemistry of paraffin-embedded Rat kidney using MYD88 Antibody (1/100 dilution, 40x lens).



Immunohistochemistry of paraffin-embedded Human colon using MYD88 Antibody (1/100 dilution, 40x lens).

MyD88 Antibody is a Rabbit Polyclonal antibody against MyD88. This gene encodes a cytosolic adapter protein that plays a central role in the innate and adaptive immune response. This protein functions as an essential signal transducer in the interleukin-1 and Toll-like receptor signaling pathways. These pathways regulate that activation of numerous proinflammatory genes. The encoded protein consists of an N-terminal death domain and a C-terminal Toll-interleukin1 receptor domain. Patients with defects in this gene have an increased susceptibility to pyogenic bacterial infections. Alternate splicing results in multiple transcript variants.

Target: Myeloid Differentiation Primary Response Protein MyD88 (MYD88)

Clonality: Polyclonal

Reactivity: Human, Rat

Tested Applications: WB, IHC

Datasheet

Version: 4.0.0
Revision date: 06 Oct 2025



Host:	Rabbit
Recommended dilutions:	WB: 1/500 - 1/2000, IHC-P: 1/50 - 1/200. Not tested in IHC-F. Optimal dilutions/concentrations should be determined by the end user.
Conjugation:	Unconjugated
Immunogen:	Recombinant fusion protein corresponding to human MYD88
Isotype:	IgG
Form:	Liquid
Purification:	Purified by affinity chromatography.
Storage:	Aliquot and store at -20°C. Avoid repeated freeze/thaw cycles.
UniProt Primary AC:	Q99836 (UniProt , ExPASy)
Gene Symbol:	MYD88
GeneID:	4615
NCBI Accession:	NP_002459.2
KEGG:	hsa:4615
String:	9606.ENSP00000401399
Molecular Weight:	Calculated MW: 15 kDa/20 kDa/28 kDa/31 kDa/33 kDa/34 kDa Observed MW: 37 kDa
Buffer:	PBS, pH 7.3, containing 0.02% sodium azide, 50% glycerol.
Concentration:	1 mg/ml
Note:	THIS PRODUCT IS FOR RESEARCH USE ONLY. NOT FOR USE IN DIAGNOSTIC, THERAPEUTIC OR COSMETIC PROCEDURES. NOT FOR HUMAN OR ANIMAL CONSUMPTION.