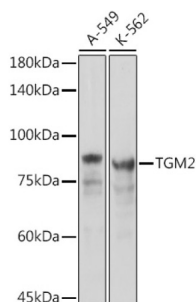
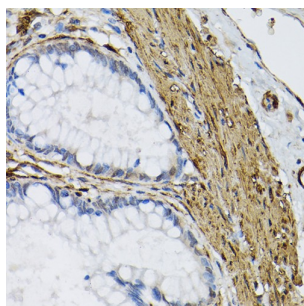


Protein-Glutamine Gamma-Glutamyltransferase 2 (TGM2) Antibody

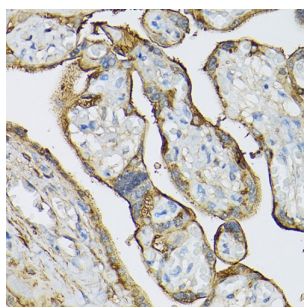
Catalogue No.: abx000934



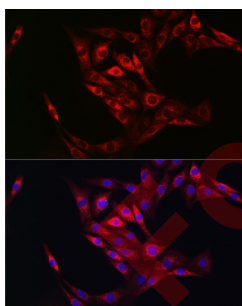
Western blot analysis of various lysates using Transglutaminase 2 (TGM2) Antibody at 1/1000 dilution. Secondary antibody: HRP-conjugated Goat anti-Rabbit IgG (H+L) at 1/10000 dilution. Lysates/proteins: 25 µg per lane. Blocking buffer: 3% nonfat dry milk in TBST. Exposure time: 10s.



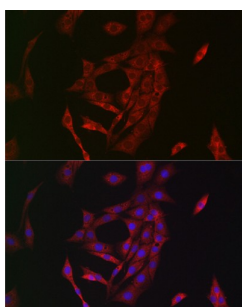
Immunohistochemistry analysis of paraffin-embedded Human colon carcinoma using Transglutaminase 2 (TGM2) Antibody at dilution of 1/50 (40x lens). High pressure antigen retrieval performed in 0.01 M Citrate buffer (pH 6.0) prior to IHC staining.



Immunohistochemistry analysis of paraffin-embedded Human placenta using Transglutaminase 2 (TGM2) Antibody at dilution of 1/50 (40x lens). High pressure antigen retrieval performed in 0.01 M Citrate buffer (pH 6.0) prior to IHC staining.



Immunofluorescence analysis of NIH/3T3 cells using Transglutaminase 2 (TGM2) Antibody at dilution of 1/50. Secondary antibody: Cy3-conjugated Goat anti-Rabbit IgG (H+L) at 1/500 dilution. Blue: DAPI for nuclear staining.



Immunofluorescence analysis of PC-12 cells using Transglutaminase 2 (TGM2) Antibody at dilution of 1/50. Secondary antibody: Cy3-conjugated Goat anti-Rabbit IgG (H+L) at 1/500 dilution. Blue: DAPI for nuclear staining.

Datasheet

Version: 5.0.0
Revision date: 11 Sep 2025



TGM2 Antibody is a Rabbit Polyclonal antibody against TGM2. Transglutaminases are enzymes that catalyze the crosslinking of proteins by epsilon-gamma glutamyl lysine isopeptide bonds. While the primary structure of transglutaminases is not conserved, they all have the same amino acid sequence at their active sites and their activity is calcium-dependent. The protein encoded by this gene acts as a monomer, is induced by retinoic acid, and appears to be involved in apoptosis. Finally, the encoded protein is the autoantigen implicated in celiac disease. Two transcript variants encoding different isoforms have been found for this gene.

Target:	Protein-Glutamine Gamma-Glutamyltransferase 2 (TGM2)
Clonality:	Polyclonal
Reactivity:	Human, Mouse, Rat
Tested Applications:	ELISA, WB, IHC, IF/ICC
Host:	Rabbit
Recommended dilutions:	ELISA: 1 µg/ml, WB: 1/500 - 1/1000, IHC-P: 1/50 - 1/200, IF/ICC: 1/50 - 1/200. Not tested in IHC-F. Optimal dilutions/concentrations should be determined by the end user.
Conjugation:	Unconjugated
Immunogen:	Recombinant protein corresponding to TGM2. The exact sequence is proprietary.
Isotype:	IgG
Form:	Liquid
Purification:	Purified by affinity chromatography.
Storage:	Aliquot and store at -20°C. Avoid repeated freeze/thaw cycles.
UniProt Primary AC:	P21980 (UniProt , ExPASy)
Gene Symbol:	TGM2
GeneID:	7052
NCBI Accession:	NP_945189.1
KEGG:	hsa:7052
String:	9606.ENSP00000355330
Molecular Weight:	Calculated MW: 77 kDa Observed MW: 77 kDa

Datasheet

Version: 5.0.0

Revision date: 11 Sep 2025



Buffer: PBS, pH 7.3, containing 0.05% Proclin-300, 50% glycerol.

Concentration: 1.16 mg/ml

Note: THIS PRODUCT IS FOR RESEARCH USE ONLY. NOT FOR USE IN DIAGNOSTIC, THERAPEUTIC OR COSMETIC PROCEDURES. NOT FOR HUMAN OR ANIMAL CONSUMPTION.

For Reference Only