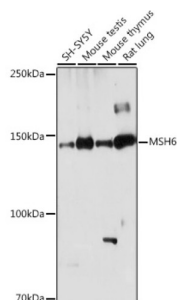
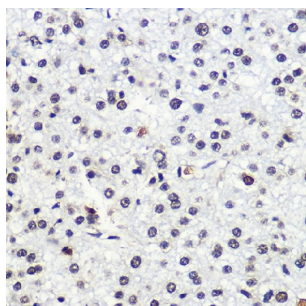


G/T Mismatch-Binding Protein (MSH6) Antibody

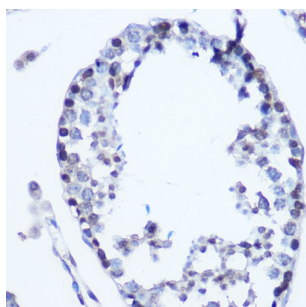
Catalogue No.: abx000936



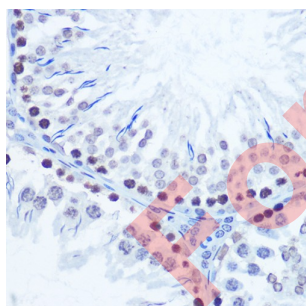
Western blot analysis of extracts of various cell lines using MSH6 Antibody (1/1000 dilution).



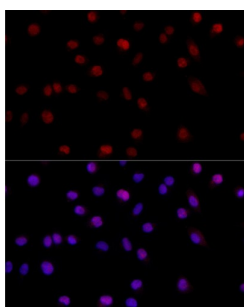
Immunohistochemistry of paraffin-embedded human liver cancer using MSH6 Antibody (1/100 dilution, 40x lens). Microwave antigen retrieval was performed in 10 mM Tris/EDTA buffer pH 9.0 before commencing with IHC staining protocol.



Immunohistochemistry of paraffin-embedded mouse testis using MSH6 Antibody (1/100 dilution, 40x lens). Microwave antigen retrieval was performed in 10 mM Tris/EDTA buffer pH 9.0 before commencing with IHC staining protocol.



Immunohistochemistry of paraffin-embedded rat testis using MSH6 Antibody (1/100 dilution, 40x lens). Microwave antigen retrieval was performed in 10 mM Tris/EDTA buffer pH 9.0 before commencing with IHC staining protocol.

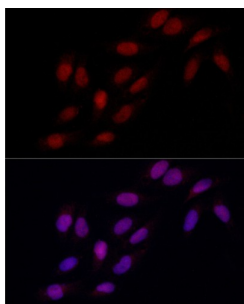


Immunofluorescence analysis of A-549 cells using MSH6 Antibody (1/200 dilution, 40x lens). Blue: DAPI for nuclear staining.

Datasheet

Version: 4.0.0

Revision date: 05 Mar 2025



Immunofluorescence analysis of U2OS cells using MSH6 Antibody (1/200 dilution, 40x lens).
Blue: DAPI for nuclear staining.

MSH6 Antibody is a Rabbit Polyclonal antibody against MSH6. This gene encodes a member of the DNA mismatch repair MutS family. In *E. coli*, the MutS protein helps in the recognition of mismatched nucleotides prior to their repair. A highly conserved region of approximately 150 aa, called the Walker-A adenine nucleotide binding motif, exists in MutS homologs. The encoded protein heterodimerizes with MSH2 to form a mismatch recognition complex that functions as a bidirectional molecular switch that exchanges ADP and ATP as DNA mismatches are bound and dissociated. Mutations in this gene may be associated with hereditary nonpolyposis colon cancer, colorectal cancer, and endometrial cancer. Transcripts variants encoding different isoforms have been described.

Target:	G/T Mismatch-Binding Protein (MSH6)
Clonality:	Polyclonal
Reactivity:	Human, Mouse, Rat, Monkey
Tested Applications:	WB, IHC, IF/ICC
Host:	Rabbit
Recommended dilutions:	WB: 1/500 - 1/2000, IHC-P: 1/50 - 1/100, IF/ICC: 1/50 - 1/200. Not tested in IHC-F. Optimal dilutions/concentrations should be determined by the end user.
Conjugation:	Unconjugated
Immunogen:	A synthetic peptide corresponding to human MSH6
Isotype:	IgG
Form:	Liquid
Purification:	Purified by affinity chromatography.
Storage:	Aliquot and store at -20°C. Avoid repeated freeze/thaw cycles.
UniProt Primary AC:	P52701 (UniProt , ExPASy)
Gene Symbol:	MSH6

Datasheet

Version: 4.0.0
Revision date: 05 Mar 2025



GeneID: [2956](#)

NCBI Accession: NP_000170.1

KEGG: hsa:2956

String: [9606.ENSP00000234420](#)

Molecular Weight: Calculated MW: 119 kDa/120 kDa/137 kDa/152 kDa

Buffer: PBS, pH 7.3, containing 0.01% thiomersal, 50% glycerol.

Concentration: 1 mg/ml

Note: THIS PRODUCT IS FOR RESEARCH USE ONLY. NOT FOR USE IN DIAGNOSTIC, THERAPEUTIC OR COSMETIC PROCEDURES. NOT FOR HUMAN OR ANIMAL CONSUMPTION.

For Reference Only