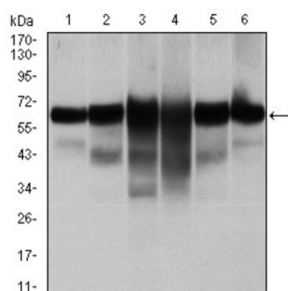
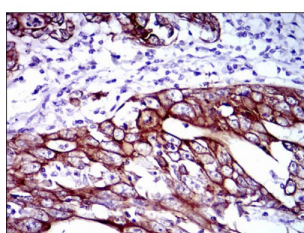


## Keratin, Type II Cytoskeletal 5 (KRT5) Antibody

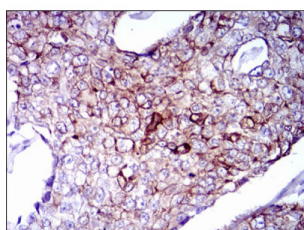
Catalogue No.: abx011780



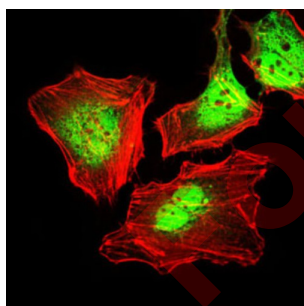
Western blot analysis using CK5 antibody against human CK5 (AA: 158-272) recombinant protein. (Expected MW is 33.3 kDa).



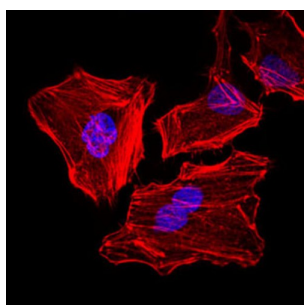
Western blot analysis using CK5 antibody against A431 (1), MCF-7 (2), HeLa (3), HepG2 (4), 3T3-L1 (5), and COS-7 (6) cell lysate.



Immunohistochemical analysis of paraffin-embedded breast cancer tissues using CK5 antibody with DAB staining.



Immunohistochemical analysis of paraffin-embedded stomach cancer tissues using CK5 antibody with DAB staining.

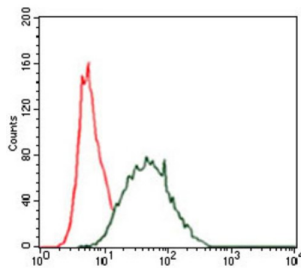


Immunofluorescence analysis of HeLa cells. Blue: DRAQ5 fluorescent DNA dye. Red: Actin filaments have been labeled with AF555 phalloidin.

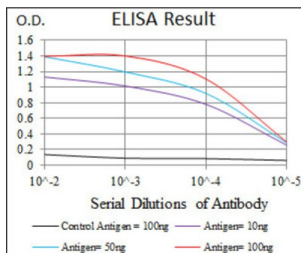
# Datasheet

Version: 3.0.0

Revision date: 05 Mar 2025



Immunofluorescence analysis of HeLa cells using CK5 antibody (green). Red: Actin filaments have been labeled with AF555 phalloidin.



Flow cytometric analysis of HeLa cells using CK5 antibody (green) and negative control (red).

The protein encoded by this gene is a member of the keratin gene family. The type II cytokeratins consist of basic or neutral proteins which are arranged in pairs of heterotypic keratin chains coexpressed during differentiation of simple and stratified epithelial tissues. This type II cytokeratin is specifically expressed in the basal layer of the epidermis with family member KRT14. Mutations in these genes have been associated with a complex of diseases termed epidermolysis bullosa simplex. The type II cytokeratins are clustered in a region of chromosome 12q12-q13.

**Target:** Keratin, Type II Cytoskeletal 5 (KRT5)

**Clonality:** Monoclonal

**Reactivity:** Human, Mouse, Monkey

**Tested Applications:** ELISA, WB, IHC, IF/ICC, FCM

**Host:** Mouse

**Recommended dilutions:** ELISA: 1/10000, WB: 1/500 - 1/2000, IHC: 1/200 - 1/1000, IF/ICC: 1/200 - 1/1000, FCM: 1/200 - 1/400. Optimal dilutions/concentrations should be determined by the end user.

**Conjugation:** Unconjugated

**Immunogen:** Purified recombinant fragment of human CK5 expressed in E. coli.

**Isotype:** IgG<sub>1</sub>

**Form:** Liquid

**Purification:** Purified from ascites by Protein G chromatography.

# Datasheet

Version: 3.0.0  
Revision date: 05 Mar 2025



**Storage:** Aliquot and store at -20°C. Avoid repeated freeze/thaw cycles.

**UniProt Primary AC:** P13647 ([UniProt](#), [ExPASy](#))

**GeneID:** [3852](#)

**KEGG:** hsa:3852

**String:** [9606.ENSP00000252242](#)

**Molecular Weight:** 62.3 kDa

**Buffer:** PBS, containing 0.05% sodium azide.

**Concentration:** 1 mg/ml

**Note:** THIS PRODUCT IS FOR RESEARCH USE ONLY. NOT FOR USE IN DIAGNOSTIC, THERAPEUTIC OR COSMETIC PROCEDURES. NOT FOR HUMAN OR ANIMAL CONSUMPTION.

For Reference Only