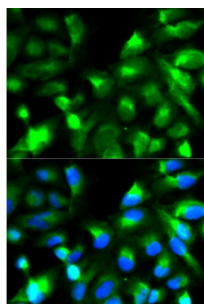


## Synaptosomal-Associated Protein 25 (SNAP25) Antibody

Catalogue No.: abx000939



Immunofluorescence analysis of HeLa cells using SNAP25 Antibody

SNAP25 Antibody is a Rabbit Polyclonal antibody against SNAP25. Synaptic vesicle membrane docking and fusion is mediated by SNAREs (soluble N-ethylmaleimide-sensitive factor attachment protein receptors) located on the vesicle membrane (v-SNAREs) and the target membrane (t-SNAREs). The assembled v-SNARE/t-SNARE complex consists of a bundle of four helices, one of which is supplied by v-SNARE and the other three by t-SNARE. For t-SNAREs on the plasma membrane, the protein syntaxin supplies one helix and the protein encoded by this gene contributes the other two. Therefore, this gene product is a presynaptic plasma membrane protein involved in the regulation of neurotransmitter release. Two alternative transcript variants encoding different protein isoforms have been described for this gene.

<b>Target:</b>	Synaptosomal-Associated Protein 25 (SNAP25)
<b>Clonality:</b>	Polyclonal
<b>Reactivity:</b>	Human, Mouse, Rat
<b>Tested Applications:</b>	IF/ICC
<b>Host:</b>	Rabbit
<b>Recommended dilutions:</b>	IF/ICC: 1/20 - 1/100. Optimal dilutions/concentrations should be determined by the end user.
<b>Conjugation:</b>	Unconjugated
<b>Immunogen:</b>	Recombinant fusion protein corresponding to human SNAP25
<b>Isotype:</b>	IgG
<b>Form:</b>	Liquid
<b>Purification:</b>	Purified by affinity chromatography.
<b>Storage:</b>	Aliquot and store at -20°C. Avoid repeated freeze/thaw cycles.
<b>UniProt Primary AC:</b>	P60880 ( <a href="#">UniProt</a> , <a href="#">ExPASy</a> )

# Datasheet

Version: 5.0.0

Revision date: 12 Sep 2025



**Gene Symbol:** SNAP25

**GeneID:** [6616](#)

**NCBI Accession:** NP\_570824.1

**Buffer:** PBS, pH 7.3, containing 0.02% sodium azide, 50% glycerol.

**Concentration:** 1 mg/ml

**Note:** THIS PRODUCT IS FOR RESEARCH USE ONLY. NOT FOR USE IN DIAGNOSTIC, THERAPEUTIC OR COSMETIC PROCEDURES. NOT FOR HUMAN OR ANIMAL CONSUMPTION.

For Reference Only