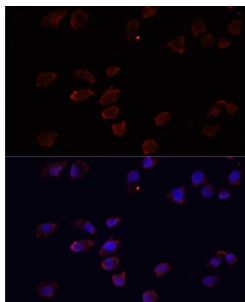


ADP-Ribosylation Factor 6 (ARF6) Antibody

Catalogue No.: abx000941



Immunofluorescence analysis of HeLa cells using ARF6 Antibody (1/100 dilution). Blue: DAPI for nuclear staining.

ARF6 Antibody is a Rabbit Polyclonal antibody against ARF6. This gene encodes a member of the human ARF gene family, which is part of the RAS superfamily. The ARF genes encode small guanine nucleotide-binding proteins that stimulate the ADP-ribosyltransferase activity of cholera toxin and play a role in vesicular trafficking and as activators of phospholipase D. The product of this gene is localized to the plasma membrane, and regulates vesicular trafficking, remodelling of membrane lipids, and signaling pathways that lead to actin remodeling. A pseudogene of this gene is located on chromosome 7.

| | |
|-------------------------------|--|
| Target: | ADP-Ribosylation Factor 6 (ARF6) |
| Clonality: | Polyclonal |
| Reactivity: | Human, Mouse, Rat |
| Tested Applications: | IF/ICC |
| Host: | Rabbit |
| Recommended dilutions: | IF/ICC: 1/50 - 1/200. Optimal dilutions/concentrations should be determined by the end user. |
| Conjugation: | Unconjugated |
| Immunogen: | Recombinant fusion protein corresponding to human ARF6 |
| Isotype: | IgG |
| Form: | Liquid |
| Purification: | Purified by affinity chromatography. |
| Storage: | Aliquot and store at -20°C. Avoid repeated freeze/thaw cycles. |
| UniProt Primary AC: | P62330 (UniProt , ExPASy) |

Datasheet

Version: 3.0.0
Revision date: 02 Jun 2025



Gene Symbol: ARF6

GeneID: [382](#)

NCBI Accession: NP_001654.1

KEGG: hsa:382

String: [9606.ENSP00000298316](#)

Buffer: PBS, pH 7.3, containing 0.02% sodium azide, 50% glycerol.

Concentration: 1 mg/ml

Note: THIS PRODUCT IS FOR RESEARCH USE ONLY. NOT FOR USE IN DIAGNOSTIC, THERAPEUTIC OR COSMETIC PROCEDURES. NOT FOR HUMAN OR ANIMAL CONSUMPTION.

For Reference Only