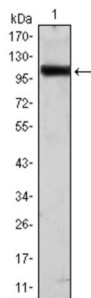


## Toll Like Receptor 2 (TLR2) Antibody

Catalogue No.: abx011833



Western blot analysis using TLR2 antibody against Hela (1) cell lysate.

The protein encoded by this gene is a member of the Toll-like receptor (TLR) family which plays a fundamental role in pathogen recognition and activation of innate immunity. TLRs are highly conserved from *Drosophila* to humans and share structural and functional similarities. They recognize pathogen-associated molecular patterns (PAMPs) that are expressed on infectious agents, and mediate the production of cytokines necessary for the development of effective immunity.

<b>Target:</b>	Toll Like Receptor 2 (TLR2)
<b>Clonality:</b>	Monoclonal
<b>Reactivity:</b>	Human
<b>Tested Applications:</b>	ELISA, WB
<b>Host:</b>	Mouse
<b>Recommended dilutions:</b>	ELISA: 1/10000, WB: 1/500 - 1/2000. Optimal dilutions/concentrations should be determined by the end user.
<b>Conjugation:</b>	Unconjugated
<b>Immunogen:</b>	Purified recombinant fragment of human TLR2 expressed in <i>E. coli</i> .
<b>Isotype:</b>	IgG <sub>1</sub>
<b>Form:</b>	Liquid
<b>Purification:</b>	Unpurified ascites.
<b>Storage:</b>	Aliquot and store at -20°C. Avoid repeated freeze/thaw cycles.
<b>UniProt Primary AC:</b>	O60603 ( <a href="#">UniProt</a> , <a href="#">ExPASy</a> )
<b>Gene Symbol:</b>	TLR2

# Datasheet

Version: 3.0.0  
Revision date: 05 Mar 2025



<b>GeneID:</b>	<a href="#">7097</a>
<b>OMIM:</b>	<a href="#">246300</a>
<b>NCBI Accession:</b>	NP_003255.2
<b>HGNC:</b>	11848
<b>KEGG:</b>	hsa:7097
<b>Ensembl:</b>	ENSG00000137462
<b>String:</b>	<a href="#">9606.ENSP00000260010</a>
<b>Molecular Weight:</b>	100 kDa
<b>Buffer:</b>	Ascitic fluid containing 0.03% sodium azide.
<b>Concentration:</b>	Not determined.
<b>Note:</b>	THIS PRODUCT IS FOR RESEARCH USE ONLY. NOT FOR USE IN DIAGNOSTIC, THERAPEUTIC OR COSMETIC PROCEDURES. NOT FOR HUMAN OR ANIMAL CONSUMPTION.

For Reference Only