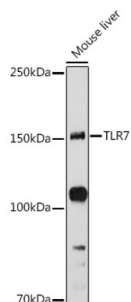
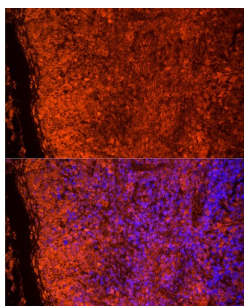


Toll-Like Receptor 7 (TLR7) Antibody

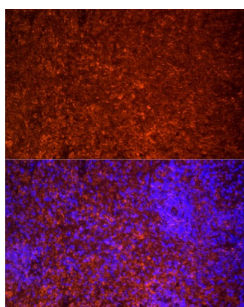
Catalogue No.: abx000944



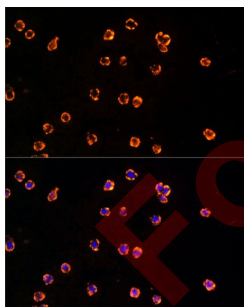
Western blot analysis of lysates from Mouse liver, using TLR7 Antibody at 1/1000 dilution. Secondary antibody: HRP-conjugated Goat anti-Rabbit IgG (H+L) at 1/10000 dilution. Lysates/proteins: 25 µg per lane. Blocking buffer: 3% nonfat dry milk in TBST. Exposure time: 90s.



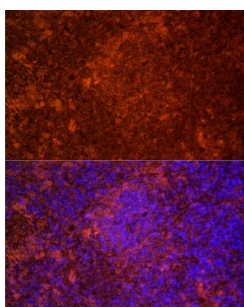
Immunofluorescence analysis of paraffin-embedded mouse spleen using TLR7 Antibody at dilution of 1/20 (40x lens). Secondary antibody: Cy3-conjugated Goat anti-Rabbit IgG (H+L) at 1/500 dilution. Blue: DAPI for nuclear staining.



Immunofluorescence analysis of paraffin-embedded rat spleen using TLR7 Antibody at dilution of 1/20 (40x lens). Secondary antibody: Cy3-conjugated Goat anti-Rabbit IgG (H+L) at 1/500 dilution. Blue: DAPI for nuclear staining.



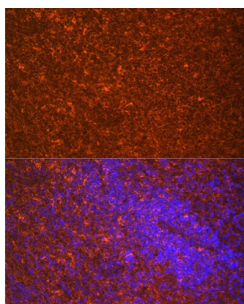
Immunofluorescence analysis of THP-1 cells using TLR7 Antibody at dilution of 1/20 (40x lens). Secondary antibody: Cy3-conjugated Goat anti-Rabbit IgG (H+L) at 1/500 dilution. Blue: DAPI for nuclear staining.



Immunofluorescence analysis of paraffin-embedded mouse spleen using TLR7 Antibody at dilution of 1/100 (40x lens). Secondary antibody: Cy3-conjugated Goat anti-Rabbit IgG (H+L) at 1/500 dilution. Blue: DAPI for nuclear staining.

Datasheet

Version: 4.0.0
Revision date: 06 Mar 2025



Immunofluorescence analysis of paraffin-embedded rat spleen using TLR7 Antibody at dilution of 1/100 (40x lens). Secondary antibody: Cy3-conjugated Goat anti-Rabbit IgG (H+L) at 1/500 dilution. Blue: DAPI for nuclear staining.

TLR7 Antibody is a Rabbit Polyclonal antibody against TLR7. The protein encoded by this gene is a member of the Toll-like receptor (TLR) family which plays a fundamental role in pathogen recognition and activation of innate immunity. TLRs are highly conserved from *Drosophila* to humans and share structural and functional similarities. They recognize pathogen-associated molecular patterns (PAMPs) that are expressed on infectious agents, and mediate the production of cytokines necessary for the development of effective immunity. The various TLRs exhibit different patterns of expression. This gene is predominantly expressed in lung, placenta, and spleen, and lies in close proximity to another family member, TLR8, on chromosome X.

| | |
|-------------------------------|--|
| Target: | Toll-Like Receptor 7 (TLR7) |
| Clonality: | Polyclonal |
| Reactivity: | Human, Mouse, Rat |
| Tested Applications: | ELISA, WB, IF/ICC |
| Host: | Rabbit |
| Recommended dilutions: | ELISA: 1 µg/ml, WB: 1/500 - 1/1000, IF/ICC: 1/50 - 1/200. Optimal dilutions/concentrations should be determined by the end user. |
| Conjugation: | Unconjugated |
| Immunogen: | Recombinant fusion protein containing a sequence corresponding to amino acids 30-230 of human TLR7. |
| Isotype: | IgG |
| Form: | Liquid |
| Purification: | Purified by affinity chromatography. |
| Storage: | Aliquot and store at -20°C. Avoid repeated freeze/thaw cycles. |
| UniProt Primary AC: | Q9NYK1 (UniProt , ExPASy) |
| Gene Symbol: | TLR7 |

Datasheet

Version: 4.0.0

Revision date: 06 Mar 2025



GeneID: [51284](#)

NCBI Accession: NP_057646.1

String: [9606.ENSP00000370034](#)

Molecular Weight: Calculated MW: 121 kDa
Observed MW: 150 kDa

Buffer: PBS, pH 7.3, containing 0.05% Proclin-300, 50% glycerol.

Concentration: > 0.2 mg/ml

Note: THIS PRODUCT IS FOR RESEARCH USE ONLY. NOT FOR USE IN DIAGNOSTIC, THERAPEUTIC OR COSMETIC PROCEDURES. NOT FOR HUMAN OR ANIMAL CONSUMPTION.

For Reference Only