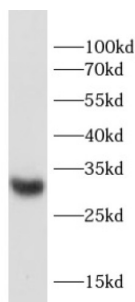
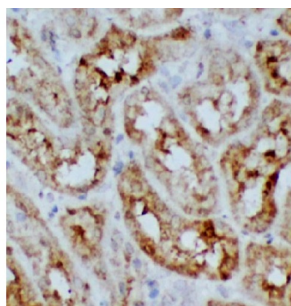


## Syndecan 4 (SDC4) Antibody

Catalogue No.: abx011861



WB analysis of MCF7 cells, using SDC4 antibody (1/1000 dilution).



IHC-P analysis of human stomach tissue, using SDC4 antibody (1/100 dilution).

Syndecan 4 (SDC4) Antibody is a Rabbit Polyclonal antibody for the detection of SDC4.

The protein encoded by this gene is a transmembrane (type I) heparan sulfate proteoglycan that functions as a receptor in intracellular signaling. The encoded protein is found as a homodimer and is a member of the syndecan proteoglycan family. This gene is found on chromosome 20, while a pseudogene has been found on chromosome 22.

**Target:** Syndecan 4 (SDC4)

**Clonality:** Polyclonal

**Reactivity:** Human

**Tested Applications:** ELISA, WB, IHC

**Host:** Rabbit

**Recommended dilutions:** WB: 1/500 - 1/2000, IHC: 1/50 - 1/200. Optimal dilutions/concentrations should be determined by the end user.

**Conjugation:** Unconjugated

**Immunogen:** Syndecan-4

**Isotype:** IgG

# Datasheet

Version: 1.0.0  
Revision date: 23 Jun 2025



Form:	Liquid
Purity:	≥ 95% (SDS-PAGE)
Purification:	Purified by immunogen affinity chromatography.
Storage:	Aliquot and store at -20°C. Avoid repeated freeze/thaw cycles.
Validity:	12 months.
UniProt Primary AC:	P31431 ( <a href="#">UniProt</a> , <a href="#">ExPASy</a> )
Gene Symbol:	SDC4
GeneID:	<a href="#">6385</a>
OMIM:	<a href="#">600017</a>
HGNC:	10661
KEGG:	hsa:6385
Ensembl:	ENSG00000124145
String:	<a href="#">9606.ENSP00000361818</a>
Molecular Weight:	Observed MW: 30 kDa
Buffer:	PBS, pH 7.3, with 0.02% sodium azide and 50% glycerol.
Concentration:	2 mg/ml
Note:	THIS PRODUCT IS FOR RESEARCH USE ONLY. NOT FOR USE IN DIAGNOSTIC, THERAPEUTIC OR COSMETIC PROCEDURES. NOT FOR HUMAN OR ANIMAL CONSUMPTION.