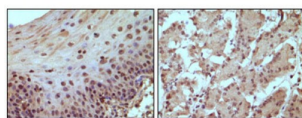


Retinoblastoma Protein 1 (RB1) Antibody

Catalogue No.: abx011911



Immunohistochemical staining of paraffin-embedded human normal esophagus (A) and stomach (B) tissue, showing nucleus localization using Rb antibody with DAB staining.

The Rb protein regulates differentiation, apoptosis, and cell cycle control by coordinating the cell cycle at G1-S with transcriptional machinery. During G1, cyclin D-dependent kinase-mediated phosphorylation of Rb at Ser-795 marks the conversion of Rb from a transcriptionally repressive, hypophosphorylated state to an inactive, phosphorylated state, which may be sustained through mitosis by differential phosphorylation of up to 16 putative serine or threonine residues. Pediatric cancer retinoblastoma and the formation of other human tumors can be attributed to mutations in the retinoblastoma tumor suppressor gene (Rb).

Target:	Retinoblastoma Protein 1 (RB1)
Clonality:	Monoclonal
Reactivity:	Human
Tested Applications:	ELISA, IHC
Host:	Mouse
Recommended dilutions:	ELISA: 1/10000, IHC: 1/200 - 1/1000. Optimal dilutions/concentrations should be determined by the end user.
Conjugation:	Unconjugated
Immunogen:	Purified recombinant fragment of human RB expressed in E. coli.
Isotype:	IgG ₁
Form:	Liquid
Purification:	Unpurified ascites.
Storage:	Aliquot and store at -20°C. Avoid repeated freeze/thaw cycles.
UniProt Primary AC:	P06400 (UniProt , ExPASy)

Datasheet

Version: 4.0.0

Revision date: 08 Sep 2025



Gene Symbol:	RB1
GeneID:	5925
OMIM:	109800
HGNC:	9884
KEGG:	hsa:5925
Ensembl:	ENSG00000139687
String:	9606.ENSP00000267163
Molecular Weight:	106 kDa
Buffer:	Ascitic fluid containing 0.03% sodium azide.
Concentration:	Not determined.
Note:	THIS PRODUCT IS FOR RESEARCH USE ONLY. NOT FOR USE IN DIAGNOSTIC, THERAPEUTIC OR COSMETIC PROCEDURES. NOT FOR HUMAN OR ANIMAL CONSUMPTION.

For Reference Only