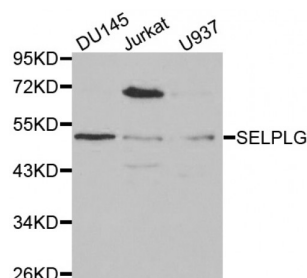


**P-Selectin Glycoprotein Ligand 1 (SELPLG) Antibody**

Catalogue No.: abx001395



Western blot analysis of extracts of various cell lines, using SELPLG antibody (abx001395) at 1/1000 dilution.

SELPLG Antibody is a Rabbit Polyclonal antibody against SELPLG. This gene encodes a glycoprotein that functions as a high affinity counter-receptor for the cell adhesion molecules P-, E- and L- selectin expressed on myeloid cells and stimulated T lymphocytes. As such, this protein plays a critical role in leukocyte trafficking during inflammation by tethering of leukocytes to activated platelets or endothelia expressing selectins. This protein requires two post-translational modifications, tyrosine sulfation and the addition of the sialyl Lewis x tetrasaccharide (sLex) to its O-linked glycans, for its high-affinity binding activity. Aberrant expression of this gene and polymorphisms in this gene are associated with defects in the innate and adaptive immune response. Alternate splicing results in multiple transcript variants.[provided by RefSeq, Apr 2011].

**Target:** P-Selectin Glycoprotein Ligand 1 (SELPLG)

**Clonality:** Polyclonal

**Reactivity:** Human

**Tested Applications:** WB

**Host:** Rabbit

**Recommended dilutions:** WB: 1/500 - 1/2000. Optimal dilutions/concentrations should be determined by the end user.

**Conjugation:** Unconjugated

**Immunogen:** Recombinant protein of human SELPLG.

**Isotype:** IgG

**Form:** Liquid

**Purification:** Affinity purified.

**Storage:** Aliquot and store at -20°C. Avoid repeated freeze/thaw cycles.

**UniProt Primary AC:** Q14242 ([UniProt](#), [ExPASy](#))

**Gene Symbol:** SELPLG

**GeneID:** [6404](#)

**KEGG:** hsa:6404

**String:** [9606.ENSP00000228463](#)

**Molecular Weight:** Calculated MW: 43 kDa, 44 kDa  
Observed MW: 52 kDa

**Buffer:** PBS, pH 7.3, 0.02% sodium azide, 50% glycerol.

**Concentration:** > 1 mg/ml

**Note:** This product is for research use only.