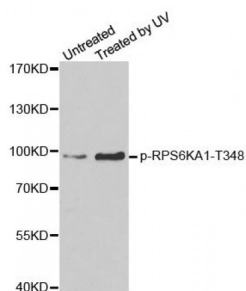
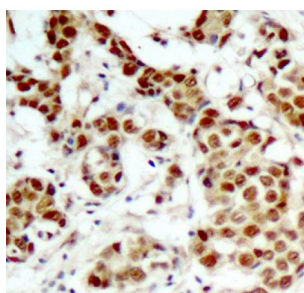


RPS6KA1 (pT348) Antibody

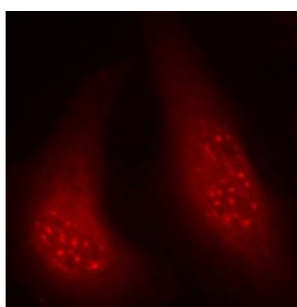
Catalogue No.: abx000218



Western blot analysis of extracts from HeLa cells, using phospho-RPS6KA1-T348 antibody (abx000218).



Immunohistochemistry of paraffin-embedded human breast carcinoma tissue, using Phospho-RPS6KA1-T348 antibody (abx000218).



Immunofluorescence staining of methanol-fixed HeLa cells using Phospho-RPS6KA1-T348 antibody (abx000218).

RPS6KA1 (pT348) Antibody is a Rabbit Polyclonal antibody against RPS6KA1 (pT348). This gene encodes a member of the RSK (ribosomal S6 kinase) family of serine/threonine kinases. This kinase contains 2 nonidentical kinase catalytic domains and phosphorylates various substrates, including members of the mitogen-activated kinase (MAPK) signalling pathway. The activity of this protein has been implicated in controlling cell growth and differentiation. Alternate transcriptional splice variants, encoding different isoforms, have been characterized.

Target: RPS6KA1 (pT348)

Clonality: Polyclonal

Reactivity: Human, Mouse, Rat

Tested Applications: WB, IHC, IF/ICC

Host: Rabbit

Recommended dilutions: WB: 1/500 - 1/2000, IHC: 1/50 - 1/100, IF/ICC: 1/100 - 1/200. Optimal dilutions/concentrations should be determined by the end user.

Conjugation: Unconjugated

Immunogen: Synthetic Peptide. A phospho specific peptide corresponding to residues surrounding T348 of human RPS6KA1.

Isotype: IgG

Form: Liquid

Purification: Affinity purified.

Storage: Aliquot and store at -20°C. Avoid repeated freeze/thaw cycles.

UniProt Primary AC: Q15418 ([UniProt](#), [ExpASY](#))

UniProt Entry Name: KS6A1_HUMAN

Gene Symbol: RPS6KA1

GeneID: [6195](#)

String: [9606.ENSP00000435412](#)

Molecular Weight: Calculated MW: 72 kDa, 81 kDa, 82 kDa, 83 kDa
Observed MW: 83 kDa

Buffer: PBS, pH 7.3, 0.02% sodium azide, 50% glycerol.

Concentration: > 1 mg/ml

Note: This product is for research use only.