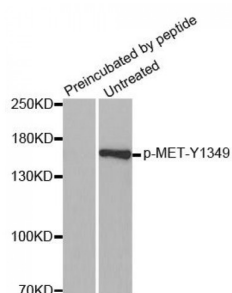


MET (pY1349) Antibody

Catalogue No.:abx000282



Western blot analysis of extracts from HepG2 cells, using Phospho-MET-Y1349 antibody (abx000282).

MET (pY1349) Antibody is a Rabbit Polyclonal antibody against MET (pY1349). The proto-oncogene MET product is the hepatocyte growth factor receptor and encodes tyrosine-kinase activity. The primary single chain precursor protein is post-translationally cleaved to produce the alpha and beta subunits, which are disulfide linked to form the mature receptor. Various mutations in the MET gene are associated with papillary renal carcinoma. Two transcript variants encoding different isoforms have been found for this gene.

Target: MET (pY1349)

Clonality: Polyclonal

Reactivity: Human, Mouse, Rat

Tested Applications: WB

Host: Rabbit

Recommended dilutions: WB: 1/500 - 1/2000. Optimal dilutions/concentrations should be determined by the end user.

Conjugation: Unconjugated

Immunogen: Synthetic Peptide. A phospho specific peptide corresponding to residues surrounding Y1349 of human MET.

Isotype: IgG

Form: Liquid

Purification: Affinity purified.

Storage: Aliquot and store at -20°C. Avoid repeated freeze/thaw cycles.

UniProt Primary AC: P08581 ([UniProt](#), [ExPASy](#))

Gene Symbol: MET

GeneID: [4233](#)

Molecular Weight: Calculated MW: 85 kDa, 155 kDa, 157 kDa
Observed MW: 156 kDa

Buffer: PBS, pH 7.3, 0.02% sodium azide, 50% glycerol.

Concentration: > 1 mg/ml

Note: This product is for research use only.