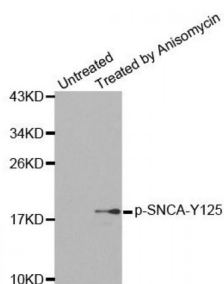
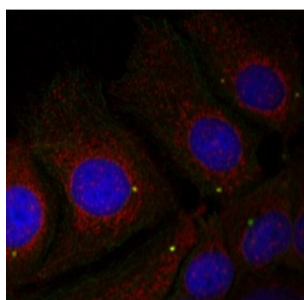


SNCA (pY125) Antibody

Catalogue No.: abx000293



Western blot analysis of extracts from C2C12 cells, using Phospho-SNCA-Y125 antibody (abx000293).



Immunofluorescence staining of methanol-fixed HeLa cells using Phospho-SNCA-Y125 antibody (abx000293).

SNCA (pY125) Antibody is a Rabbit Polyclonal antibody against SNCA (pY125). Alpha-synuclein is a member of the synuclein family, which also includes beta- and gamma-synuclein. Synucleins are abundantly expressed in the brain and alpha- and beta-synuclein inhibit phospholipase D2 selectively. SNCA may serve to integrate presynaptic signaling and membrane trafficking. Defects in SNCA have been implicated in the pathogenesis of Parkinson disease. SNCA peptides are a major component of amyloid plaques in the brains of patients with Alzheimer's disease. Four alternatively spliced transcripts encoding two different isoforms have been identified for this gene.

Target: SNCA (pY125)

Clonality: Polyclonal

Reactivity: Human, Mouse

Tested Applications: WB, IF/ICC

Host: Rabbit

Recommended dilutions: WB: 1/500 - 1/2000, IF/ICC: 1/100 - 1/200. Optimal dilutions/concentrations should be determined by the end user.

Conjugation: Unconjugated

Immunogen: Synthetic Peptide. A phospho specific peptide corresponding to residues surrounding Y125 of human SNCA.

Isotype:	IgG
Form:	Liquid
Purification:	Affinity purified.
Storage:	Aliquot and store at -20°C. Avoid repeated freeze/thaw cycles.
UniProt Primary AC:	P37840 (UniProt , ExpASY)
UniProt Secondary AC:	A8K2A4, Q13701, Q4JHI3, Q6IAU6
Gene Symbol:	SNCA
GeneID:	6622
Molecular Weight:	Calculated MW: 11 kDa, 13 kDa, 14 kDa Observed MW: 18 kDa
Buffer:	PBS, pH 7.3, 0.02% sodium azide, 50% glycerol.
Concentration:	> 1 mg/ml
Note:	This product is for research use only.